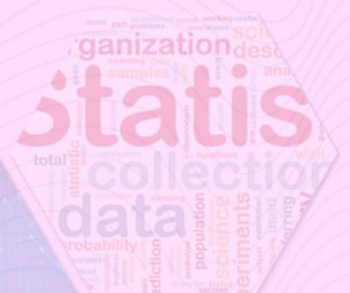




ធនាគារជាតិ នៃ កម្ពុជា
NATIONAL BANK OF CAMBODIA

ព្រឹត្តិបត្រស្ថិតិសេដ្ឋកិច្ច និងរូបិយវត្ថុ Economic and Monetary Statistics Bulletin

ខែតុលា ឆ្នាំ២០២៤
OCTOBER 2024



លេខ៣៧២ – ឆ្នាំទី៣២

SERIES NO. 372- 32ND YEAR

Contents

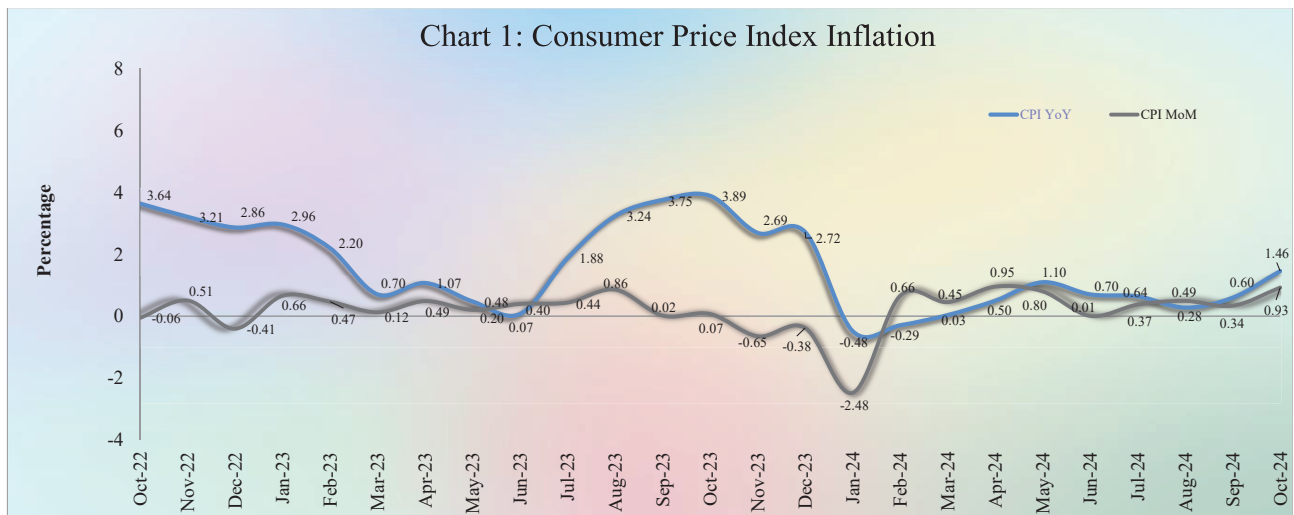
	Page
- Introduction.....	1
- Exchange Rate.....	1
- Money Supply.....	1
- Net Domestic Assets of the Depository Corporations.....	2
- Net Foreign Assets of the Depository Corporations.....	2
- Other Depository Corporations Survey.....	3
- Other Financial Corporations Survey.....	3
- Interest Rates on Loans and Deposits.....	3
- Foreign Tourist Arrivals.....	4
- International Trade in Goods.....	4
Table 1 : Consumer Price Index and Inflation Rate.....	6
Table 2 : Consumer Items Showing Price Increased in October 2024.....	7
Table 3 : Gross Domestic Product.....	8
Chart 1 : GDP by Economic Activity (At Constant 2014 Prices).....	8
Chart 2 : GDP by Economic Activity (At Current Prices).....	8
Table 4 : Residential Property Price Index.....	9
Chart 3 : RPPI Month on Month Change.....	9
Chart 4 : RPPI Year on Year Change.....	9
Table 5 : Approved Investment Projects by Sectors.....	10
Chart 5 : Investment Fixed Assets by Sectors.....	10
Chart 6 : Numbers of Investment Projects by Sectors.....	10
Table 6 : Approved Investment Projects by Major Countries.....	11
Table 7 : Daily Exchange Rate in October 2024 (KHR/USD).....	12
Table 8 : Monthly Exchange Rate (KHR/USD, End-Period).....	13
Chart 7 : Trend of Monthly Exchange Rate.....	13
Table 9 : The Value of KHR Against Other Currencies (Official Buying Rates, End-Period).....	14
Table 10: Deposit Money Bank's Interest Rates on Deposits and Loans in KHR.....	15
Table 11: Central Bank Survey.....	16
Table 12: Other Depository Corporations Survey.....	17
Table 13: Depository Corporations Survey.....	18
Table 14: Other Financial Corporations Survey.....	19
Table 15: Financial Corporations Survey.....	20
Chart 8 : Financial Corporations Survey.....	21
Chart 9 : Monetary Aggregates Components.....	21
Table 16: Credit Granted by Deposit Money Banks Classified by Industry.....	22
Chart 10: Credit Granted by Deposit Money Banks Classified by Industry.....	22
Table 17: Monthly Change of Credit Granted by Deposit Money Banks Classified by Industry.....	23
Table 18: Deposits with Deposit Money Banks.....	24
Chart 11: Deposits with Deposit Money Banks Classified by Currency, as of October 2024 (% of Total Deposits).....	24
Table 19: Monthly Change of Deposits with Deposit Money Banks.....	25
Chart 12: Deposits in KHR Classified by Type, as of October 2024 (% of Total KHR Deposits).....	26
Chart 13: Deposits in Foreign Currency Classified by Type, as of October 2024 (% of Total FCD).....	26
Table 20: Credit Granted by Micro-Finance Institutions and Non-Government Organizations.....	27
Table 21: KHR-Denominated Checks Clearing Through Clearing House.....	28
Table 22: USD-Denominated Checks Clearing Through Clearing House.....	29
Table 23: Visitor Arrivals in Cambodia.....	30
Table 24: Cambodia's Imports and Exports.....	31
Table 25: The Banking System in Cambodia.....	32-33

Introduction

Headline consumer price inflation in October 2024 accelerated over the previous month, while the Khmer riel (KHR) depreciated against US dollar. During this period, residents' deposits in the banking sector and credit to private sector continued to increase slightly. In the meantime, international trade in goods showed a deficit.

Consumer Price Index

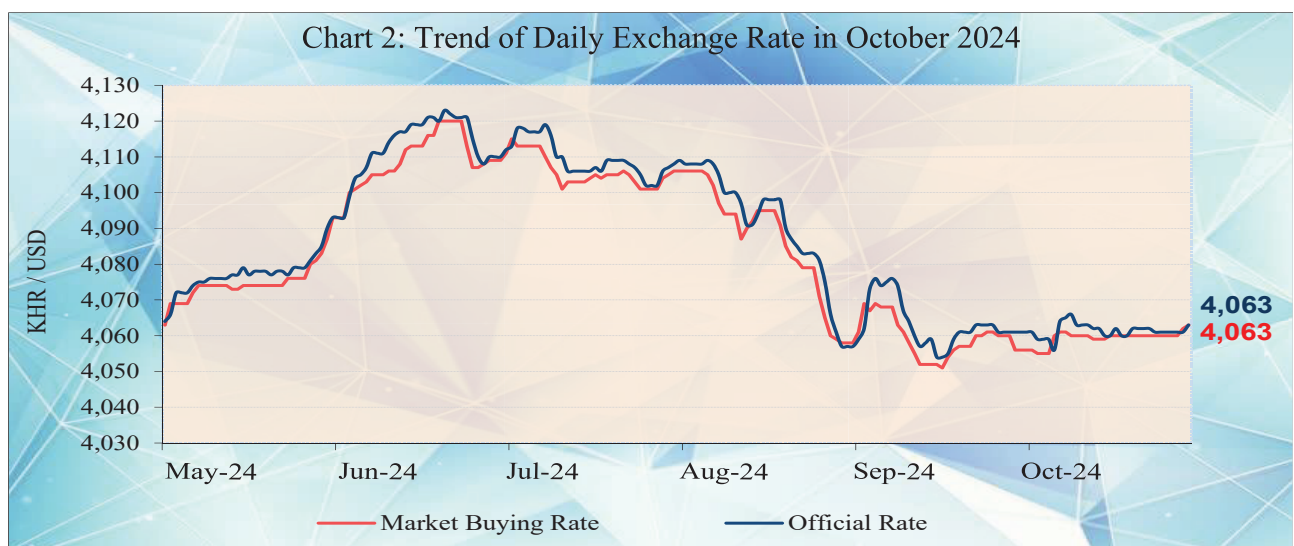
The consumer price inflation in Phnom Penh (month-on-month) slightly rose to 0.93% in October 2024 from 0.34% in September, in which eleven of the twelve group indexes increased, while the other one group index decreased.



During the same period, the year-on-year percentage change of the CPI for all items surged to 1.46% from 0.6% in September, which was mainly due to the increase in prices of food and non-alcoholic beverages, clothing and footwear, and restaurants.

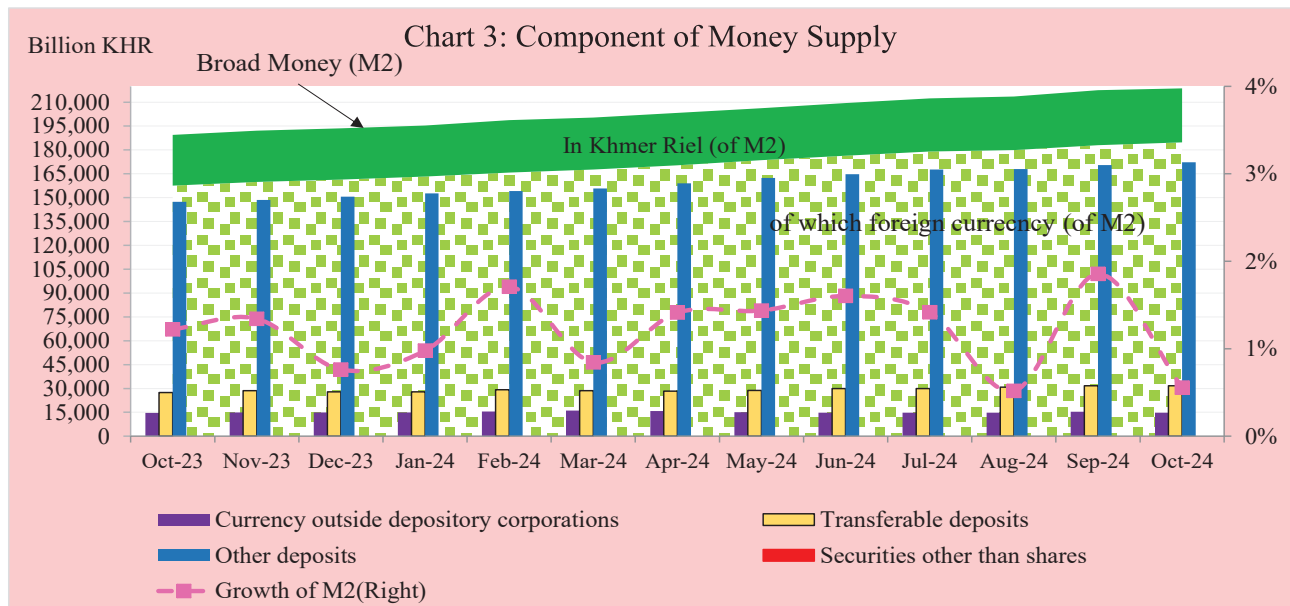
Exchange Rate

The exchange rate (market buying rate) was KHR 4,063 per USD in October 2024, depreciated by 0.17% over September.



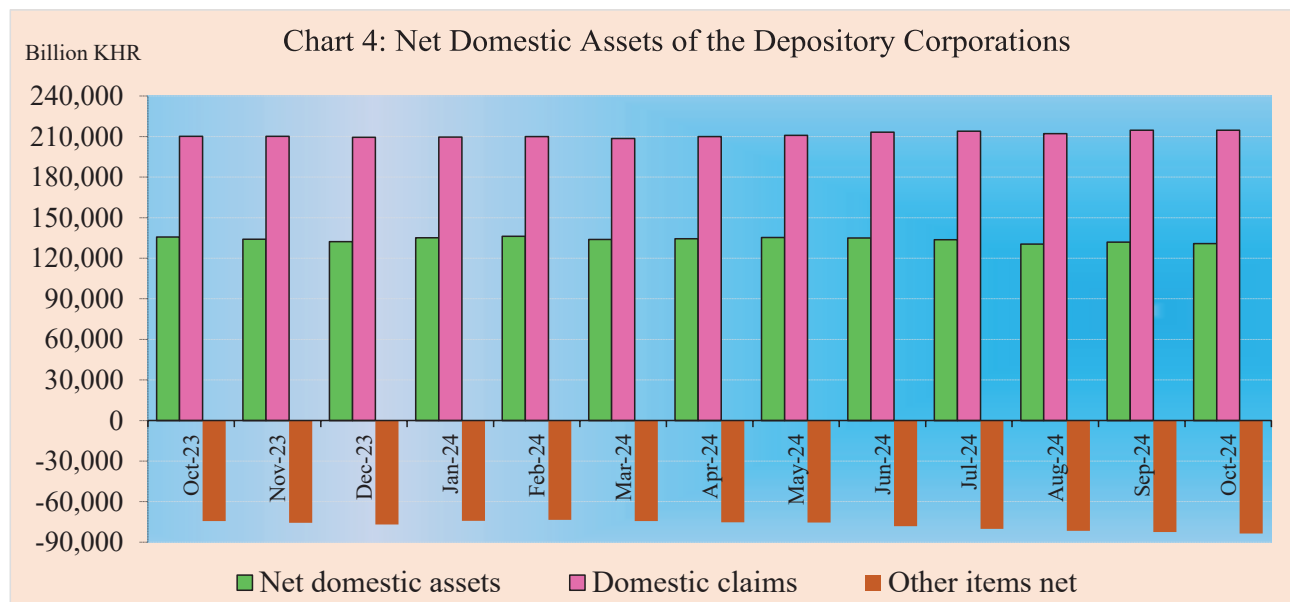
Money Supply

Broad money (M2) increased to KHR 218,728.4 billion in October 2024, increased by 0.6% compared to September. The main components of M2 indicated that other deposits and transferable deposits increased by 2.7% and 0.1%; respectively, while currency outside depository corporations declined by 4.1%.



Net Domestic Assets of the Depository Corporations

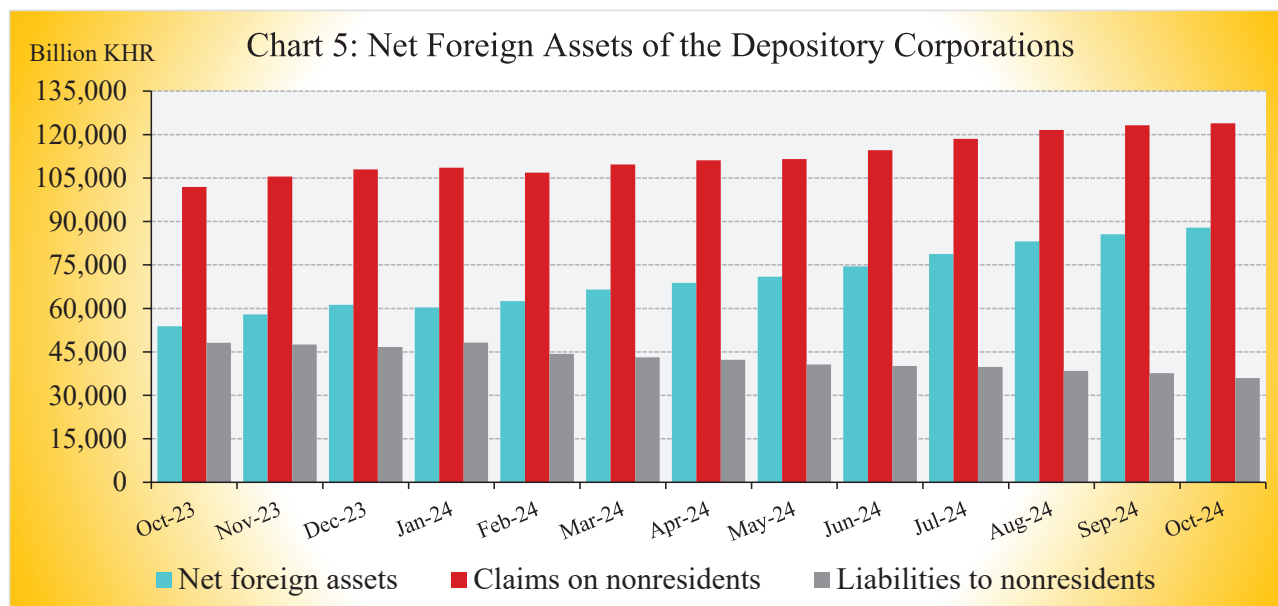
Net domestic assets of the depository corporations decreased by 0.8% to KHR 130,865.3 billion in October 2024 compared to September. This was due to the fall of 1.3% in other items net and 0.02% in net domestic credit.



The decrease in net domestic credit was due to the drop in net credit to nonfinancial public sector, and net credit to other financial corporations by 2.7% and 0.8%, respectively, while credit to private sector increased by 0.2%. The decline in other items net was due to a plunge of 25.2% and 1.7% in others and capital accounts, respectively.

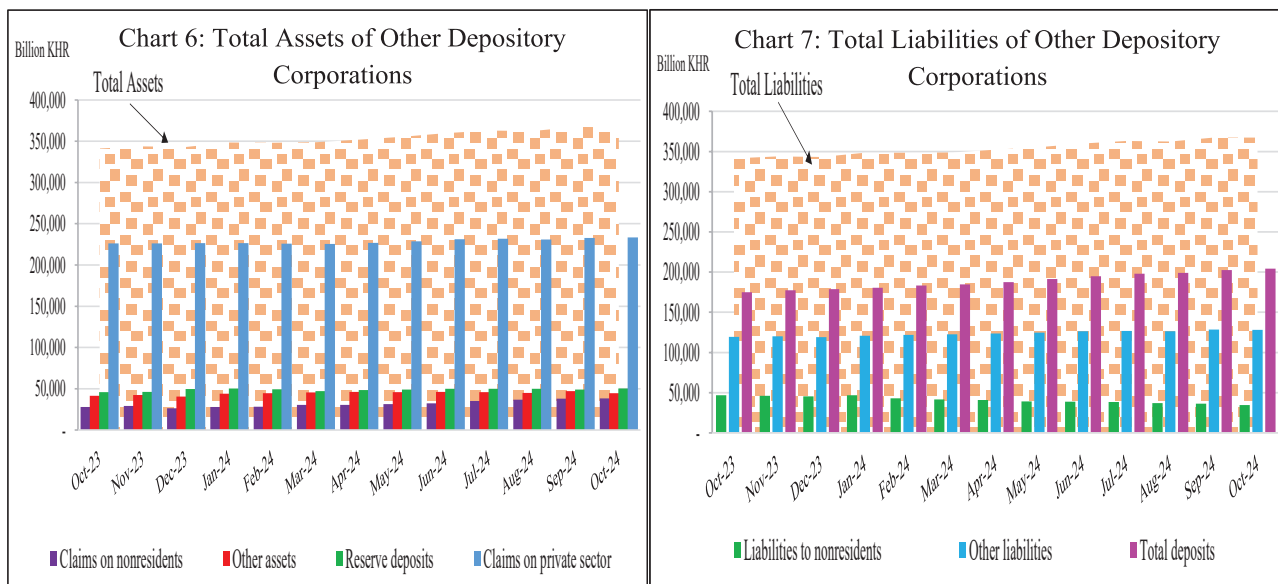
Net Foreign Assets of the Depository Corporations

Net foreign assets of the depository corporation increased to KHR 87,863.2 billion in October 2024, grew by 2.7% from September. This was due to the increase of 0.9% and 0.3% in other foreign assets and gross foreign reserve, respectively, while foreign liabilities declined by 4.5%.



Other Depository Corporations Survey

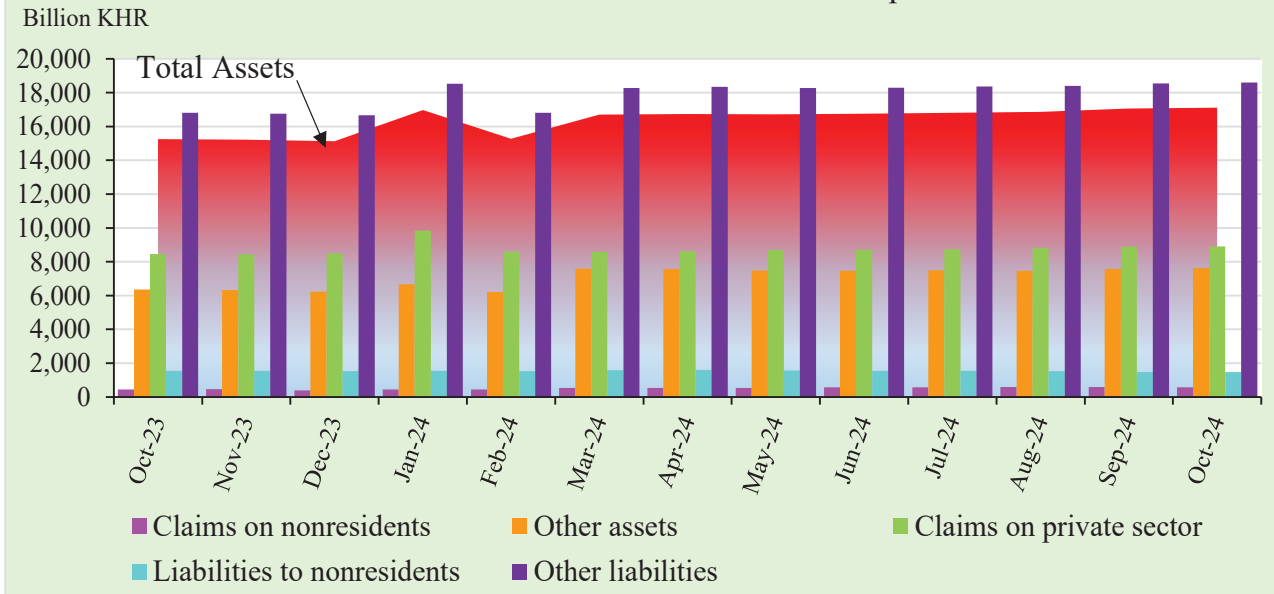
Total assets of other depository corporations (including commercial banks and microfinance deposit-taking institutions) were KHR 367,160.6 billion, decreased by 0.04% in October 2024 compared to the previous month.



Other Financial Corporations Survey

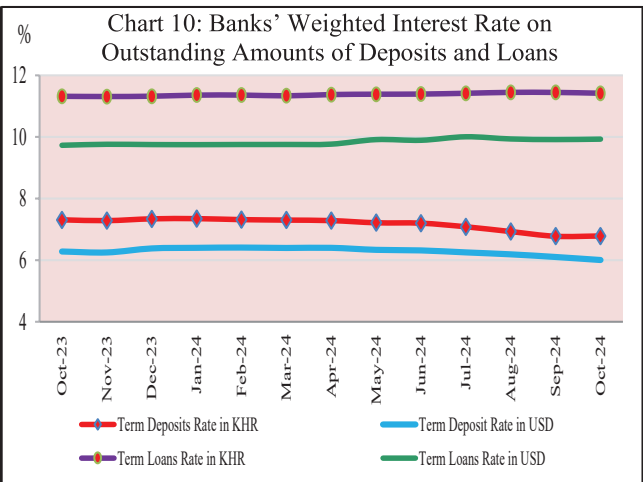
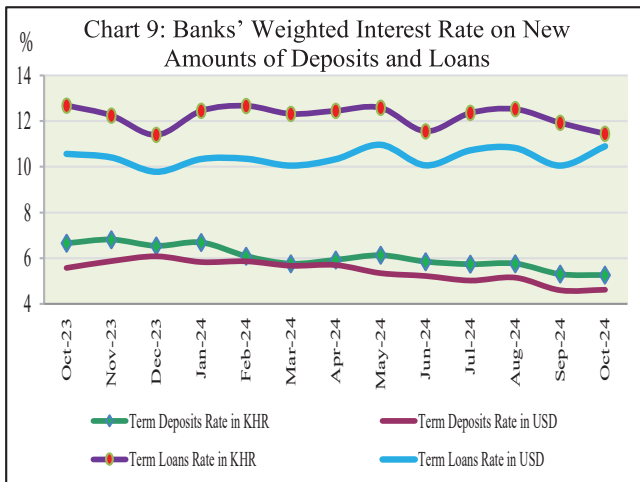
Total assets of other financial corporations (including specialized banks, MFIs, and insurance companies) were KHR 17,113.5 billion, increased by 0.3% in 2024 compared to September.

Chart 8: Total Assets of Other Financial Corporations



Interest Rates on Deposits and Loans

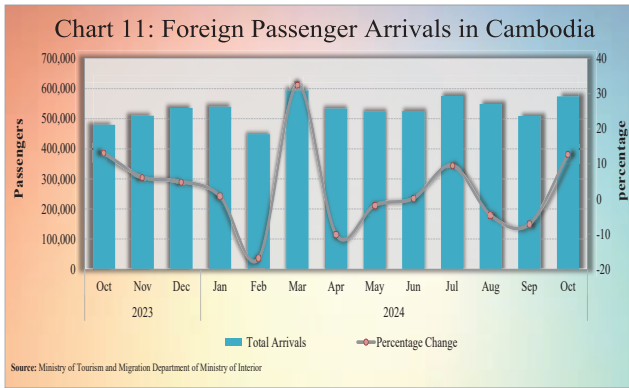
Interest rate on deposits and loans of banking sector in October 2024 showed that the (new amount) weighted average interest rate on term deposits in KHR decreased by 0.04% to 5.26%, while term deposits in USD increased by 0.02% to 4.62%. At the same time, the weighted average interest rate on term loans in KHR fell by 0.48% to 11.45%, and term loans in USD declined by 0.84% to 10.9%.



Foreign Tourist Arrivals

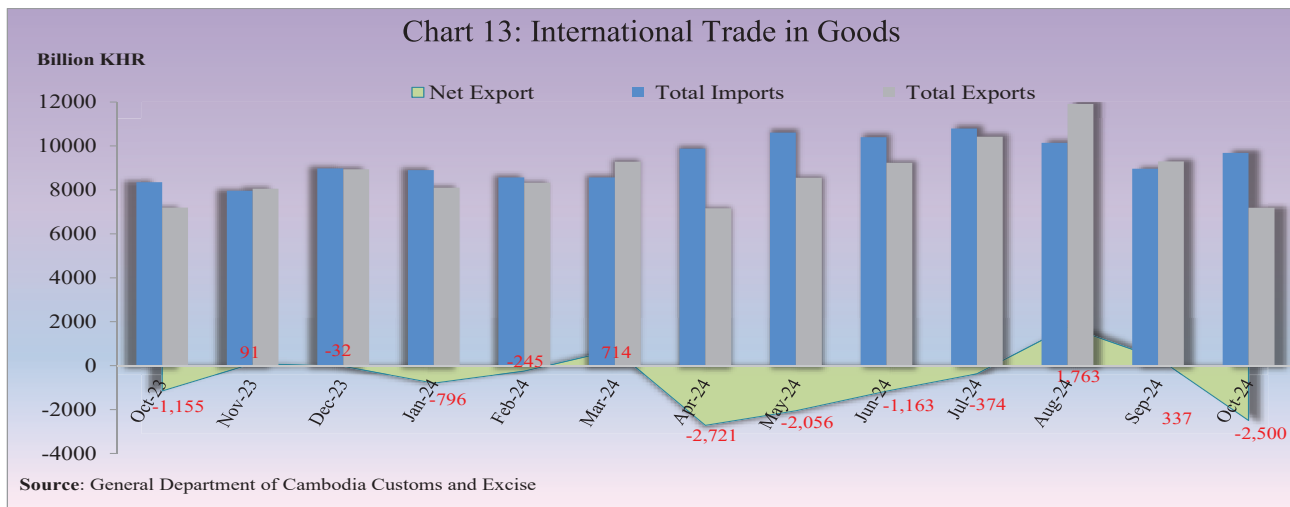
In October 2024, the total number of passenger arrivals was 574,206, increased by 12.7% after the decline of 7.2% in the previous month. The main purposes of the passenger arrivals in Cambodia were for vacation, and business and professional, which were accounted for 73,8% and 24.6% of the total, respectively.

Most of the foreign passengers were from Thailand, Vietnam, China P.R.C., Laos PDR, Indonesia, United States of America, South Korea, France, Australia, and United Kingdom.



International Trade in Goods

International trade in goods showed a deficit of KHR 2,499.6 billion (25.8%) in October 2024, following the surplus of KHR 336.6 billion (3.8%) in September.



The major components of total exports were Garment, Fish and other agricultural Products, Other Textile Products, Footwear, Rubber, Rice, Electrical Part, Wood Products, Bicycle, and Vehicle part. In addition, the major components of total imports were Fabric, Oil, Vehicle, Food and Beverage, Equipment Construction, Garment, Steel, Cigarette, Fertilizer, Medicine, and Other Electronic Equipment.

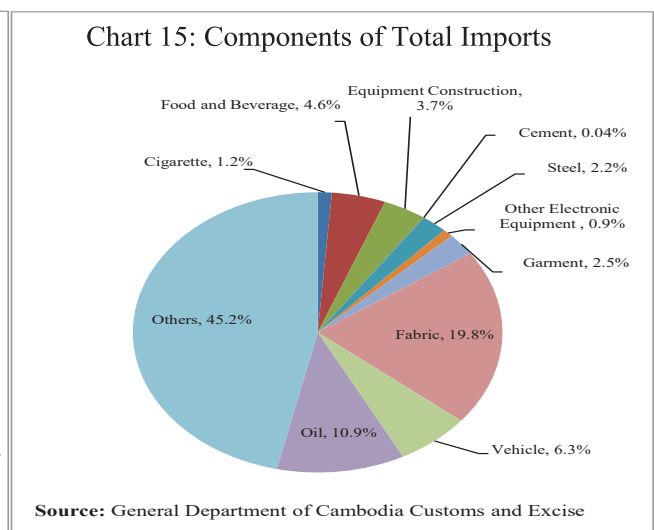
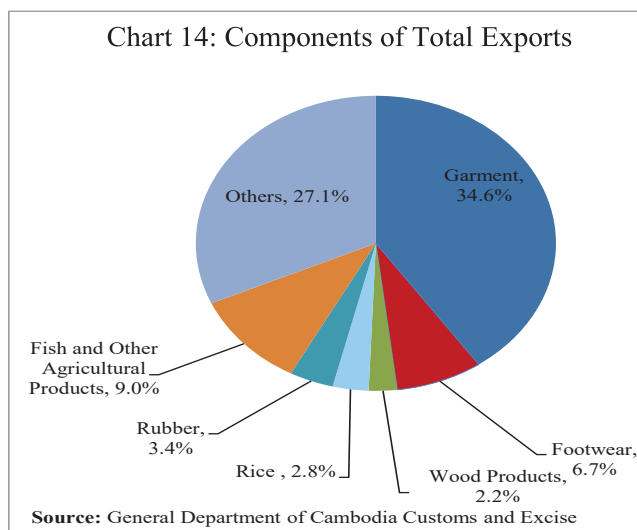


Table 1: Consumer Price Index and Inflation Rate

1. Consumer Price Index (CPI) and Component Indices (Oct-Dec. 2006 = 100)	Jun-24	Jul-24	Aug-24	Sep-24	Oct-24
CPI (all items)	203.56	204.32	205.33	206.03	207.93
Food and Non-Alcoholic Beverages	253.85	254.55	256.49	258.71	261.65
Alcoholic Beverages, Tobacco and Narcotics	183.41	183.40	184.19	184.56	185.15
Clothing and Footwear	185.16	186.44	187.86	190.18	192.40
Housing, Water, Electricity, Gas and other Fuels	141.15	141.59	142.18	142.42	142.77
Furnishings and Household Maintenance	163.87	164.38	164.85	165.60	166.36
Health	147.32	147.63	148.28	145.02	148.86
Transport	125.01	126.31	125.26	121.77	123.10
Communication	66.47	66.50	66.51	66.59	66.62
Recreation and Culture	132.12	133.32	133.71	134.41	134.32
Education	175.94	175.94	176.57	177.68	178.62
Restaurants	328.35	330.10	330.62	332.46	333.25
Miscellaneous Goods and Services	171.39	171.81	172.44	173.08	173.84
2. Percentage Change in the CPI and its Components					
2.1 Month on Month Change (%)					
CPI (all items)	0.01	0.37	0.49	0.34	0.93
Food and Non-Alcoholic Beverages	-0.31	0.27	0.76	0.86	1.14
Alcoholic Beverages, Tobacco and Narcotics	0.27	0.00	0.43	0.20	0.32
Clothing and Footwear	0.51	0.69	0.76	1.23	1.17
Housing, Water, Electricity, Gas and other Fuels	0.15	0.31	0.41	0.17	0.24
Furnishings and Household Maintenance	0.09	0.31	0.29	0.46	0.46
Health	2.35	0.21	0.44	-2.20	2.65
Transport	0.02	1.04	-0.83	-2.79	1.09
Communication	-0.10	0.05	0.02	0.11	0.05
Recreation and Culture	0.07	0.91	0.29	0.53	-0.07
Education	0.00	0.00	0.36	0.63	0.53
Restaurants	0.58	0.53	0.16	0.56	0.24
Miscellaneous Goods and Services	0.14	0.24	0.37	0.37	0.44
2.2 Year on Year Change (%)					
CPI (all items)	0.70	0.64	0.28	0.60	1.46
Food and Non-Alcoholic Beverages	0.81	0.61	0.74	1.41	2.12
Alcoholic Beverages, Tobacco and Narcotics	0.12	-0.06	-0.31	-0.80	-0.54
Clothing and Footwear	2.52	2.59	2.65	3.79	4.68
Housing, Water, Electricity, Gas and other Fuels	0.00	0.03	-0.06	0.15	0.28
Furnishings and Household Maintenance	0.52	0.63	0.72	1.18	1.55
Health	2.55	2.56	2.81	0.89	3.65
Transport	-0.34	0.57	-3.51	-5.82	-3.13
Communication	-0.17	-0.25	-0.36	-0.16	-0.10
Recreation and Culture	-0.01	0.32	-0.01	0.98	0.63
Education	2.52	2.12	2.48	3.13	3.67
Restaurants	0.72	0.44	-0.75	0.28	1.22
Miscellaneous Goods and Services	0.41	0.40	0.44	0.99	1.20
3. Three-month moving average CPI (All Items)					
Year on Year Change (%)	0.77	0.81	0.54	0.50	0.78
4. Twelve-month moving average CPI (All Items)					
Year on Year Change (%)	1.64	1.53	1.28	1.02	0.82

Source: National Institute of Statistics

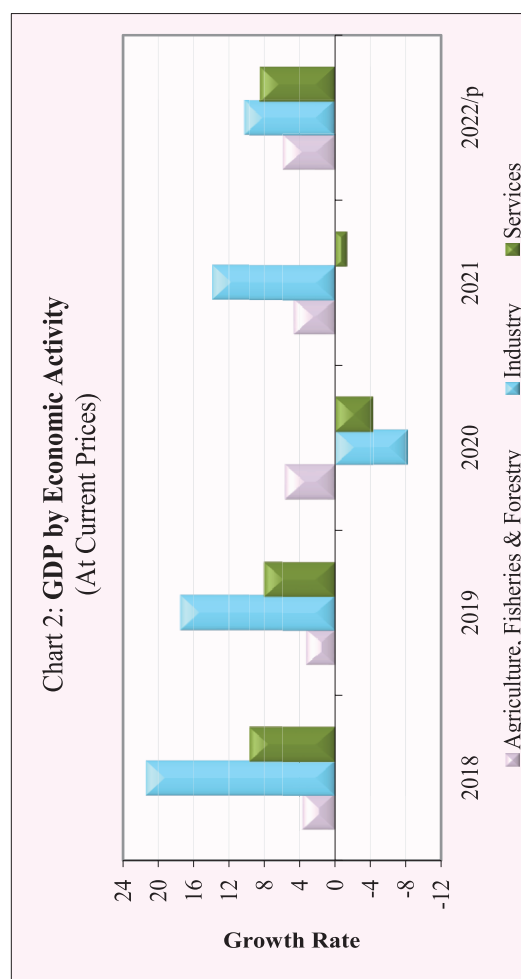
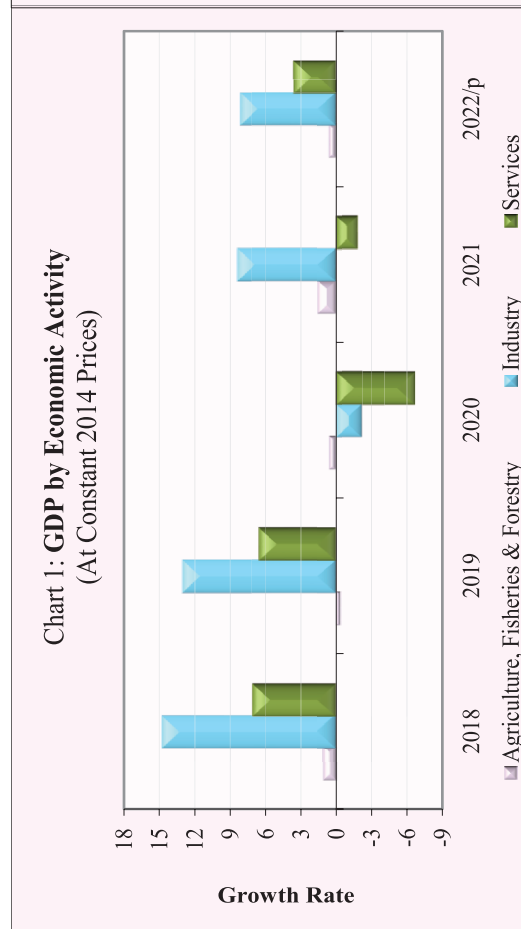
Table 2: Consumer Items Showing Price Increased in October 2024

No.	Description	Weight	Index			Percentage Change	
			Oct-23	Sep-24	Oct-24	Monthly	Yearly
1	FRESH FRUITS	4.094	274.79	282.37	295.08	4.5	7.4
2	MOTOR CYCLES	2.736	141.12	137.42	142.98	4.0	1.3
3	MEDICAL PRODUCTS, APPLIANCES AND EQUIPMENT	3.588	143.22	144.42	149.79	3.7	4.6
4	MAINTENANCE AND REPAIRS OF PERSONAL TRANSPORT EQUIPMENT	0.265	324.04	339.37	347.31	2.3	7.2
5	MOTOR OIL	0.062	196.79	193.17	197.66	2.3	0.4
6	BREAD	0.173	261.94	265.87	271.55	2.1	3.7
7	FRUIT VEGETABLES	1.138	395.28	417.13	425.85	2.1	7.7
8	ROOT VEGETABLES	0.456	309.13	327.59	333.37	1.8	7.8
9	PULSES/LEGUMES	0.413	272.78	295.71	300.87	1.7	10.3
10	SUGAR, JAM, HONEY, CHOCOLATE AND CONFECTIONERY	1.489	172.46	182.17	185.25	1.7	7.4
11	OTHER GRAINS	0.090	374.79	376.16	382.51	1.7	2.1
12	HOUSEHOLD TEXTILES	0.015	209.64	216.39	220.02	1.7	4.9
13	TUBERS AND MUSHROOMS	0.439	235.76	248.45	252.56	1.7	7.1
14	OTHER ARTICLES OF CLOTHING AND CLOTHING ACCESSORIES	0.059	162.52	170.73	173.52	1.6	6.8
15	MINERAL WATERS, SOFT DRINKS, FRUIT AND VEGETABLE JUICES	0.748	149.08	156.02	158.21	1.4	6.1
16	DAIRY PRODUCTS	1.552	184.63	185.38	187.89	1.4	1.8
17	OTHER CLOTHING (BOTH SEXES)	0.222	150.91	160.17	162.30	1.3	7.5
18	LEAF AND STALK VEGETABLES (FRESH)	2.031	258.59	267.02	270.56	1.3	4.6
19	CLOTHING FOR MEN AND BOYS	0.621	177.71	183.93	186.26	1.3	4.8
20	FOOTWEAR	0.641	199.33	207.62	210.24	1.3	5.5
21	GLASSWARE, TABLEWARE AND HOUSEHOLD UTENSILS	0.078	157.34	159.04	161.03	1.3	2.3
22	CLOTHING MATERIALS	0.334	207.63	214.34	216.98	1.2	4.5
23	MATERIALS FOR THE MAINTENANCE AND REPAIR OF THE DWELLING	3.663	172.86	176.70	178.83	1.2	3.5
24	TOOLS AND EQUIPMENT FOR HOUSE AND GARDEN	0.017	240.02	246.85	249.81	1.2	4.1
25	FOOD PRODUCTS NEC	1.404	260.63	268.22	271.43	1.2	4.1
26	OTHER APPLIANCES, ARTICLES AND PRODUCTS FOR PERSONAL CARE	0.399	179.96	184.22	186.23	1.1	3.5
27	OILS AND FATS	0.920	241.61	242.84	245.44	1.1	1.6
28	CLOTHING FOR WOMEN AND GIRLS	1.065	181.42	186.39	188.33	1.0	3.8
29	PROCESSED FISH AND SEAFOOD	1.646	315.17	318.23	321.40	1.0	2.0
30	FISH (FRESH)	7.435	281.98	278.11	280.00	0.7	-0.7
31	SPARE PARTS AND ACCESSORIES FOR PERSONAL TRANSPORT EQUIPMENT	0.084	307.70	314.14	316.22	0.7	2.8
32	DUCK (FRESH)	0.319	230.65	232.10	233.62	0.7	1.3
33	CHICKEN (FRESH)	1.303	241.93	243.18	244.63	0.6	1.1
34	NOODLES	1.008	250.95	257.01	258.53	0.6	3.0
35	PORK (FRESH)	5.618	258.14	257.10	258.61	0.6	0.2
36	HOSPITAL SERVICES	0.412	193.72	200.84	202.02	0.6	4.3
37	EDUCATION	1.174	172.29	177.68	178.62	0.5	3.7
38	BEEF (FRESH)	2.165	285.73	288.71	290.20	0.5	1.6
39	SEAFOOD (FRESH, CHILLED OR FROZEN)	0.229	268.13	273.29	274.66	0.5	2.4
40	LOCALLY PROCESSED MEAT	0.276	279.64	278.09	279.48	0.5	-0.1

Source: National Institute of Statistics

Table 3: Gross Domestic Product (GDP)

	At Constant 2014 Prices					At Current Prices				
	2018	2019	2020	2021	2022/p	2018	2019	2020	2021	2022/p
GDP in Billion KHR	121,026	130,632	125,987	129,880	136,508	134,280	148,985	142,503	150,793	164,059
GDP in Million USD	29,772	32,322	31,240	31,964	33,446	32,931	36,344	34,835	36,726	39,491
GDP % Growth Rate	8.8	7.9	-3.6	3.1	5.1	12.9	11.0	-4.4	5.8	8.8
GDP % Growth Rate, by Economic Activity										
Agriculture, Fisheries & Forestry	1.1	-0.4	0.6	1.5	0.6	3.7	3.2	5.5	4.6	5.8
Industry	14.8	13.0	-2.2	8.4	8.2	21.4	17.5	-8.2	13.9	10.3
Services	7.1	6.6	-6.7	-1.8	3.6	9.7	8.0	-4.3	-1.4	8.5
GDP Per Capita in Million KHR	7.6	8.1	7.7	7.8	8.1	8.5	9.3	8.7	9.1	9.7
GDP Per Capita in USD	1,882	2,010	1,912	1,926	1,986	2,081	2,260	2,132	2,213	2,345



p/: preliminary estimates

Source: National Institute of Statistics

Table 4: Residential Property Price Index (RPPI)

	Aug-23	Sep-23	Oct-23	Nov-23	Dec-23	Jan-24	Feb-24	Mar-24	Apr-24	May-24	Jun-24	Jul-24	Aug-24	Sep-24	Oct-24
Residential Property Price Index (2020 =100)															
Overall RPPI	114.8	114.1	113.1	111.9	111.5	112.0	112.0	111.0	110.7	110.8	111.6	112.8	112.8	112.4	111.0
RPPI in Phnom Penh	115.9	115.2	113.8	112.2	111.4	112.3	112.7	111.8	111.5	111.2	112.7	114.1	115.1	114.9	113.6
RPPI in Other Provinces	108.9	108.4	109.7	110.4	111.5	110.4	109.3	107.7	107.6	109.0	107.2	107.3	103.2	102.4	100.6
Month on Month Change (%)															
Overall RPPI	-0.2	-0.6	-0.8	-1.1	-0.4	0.5	0.0	-0.9	-0.3	0.1	0.7	1.1	0.0	-0.3	-1.3
RPPI in Phnom Penh	0.0	-0.7	-1.2	-1.4	-0.7	0.8	0.3	-0.7	-0.3	-0.2	1.3	1.3	0.9	-0.2	-1.2
RPPI in Other Provinces	-1.4	-0.4	1.2	0.7	0.9	-0.9	-1.0	-1.5	-0.1	1.4	-1.7	0.1	-3.8	-0.8	-1.7
Year on Year Change (%)															
Overall RPPI	1.1	-0.4	-1.7	-2.5	-2.9	-1.6	-1.0	-1.7	-2.9	-4.1	-3.9	-2.0	-1.8	-1.5	-1.9
RPPI in Phnom Penh	0.5	-1.1	-2.6	-3.3	-3.9	-2.1	-1.7	-2.5	-4.1	-5.4	-4.1	-1.5	-0.7	-0.2	-0.2
RPPI in Other Provinces	6.6	5.8	5.5	3.2	3.6	2.1	4.2	3.4	4.3	3.1	-1.9	-2.9	-5.2	-5.5	-8.2

Note:

The methodology used to generate the RPPI index is the time-

which complies with the IMF's RPPI Practical Compilation Guide published in 2020 (<https://www.imf.org/en/Data/Statistics/RPPI-guide>).

*Revised data

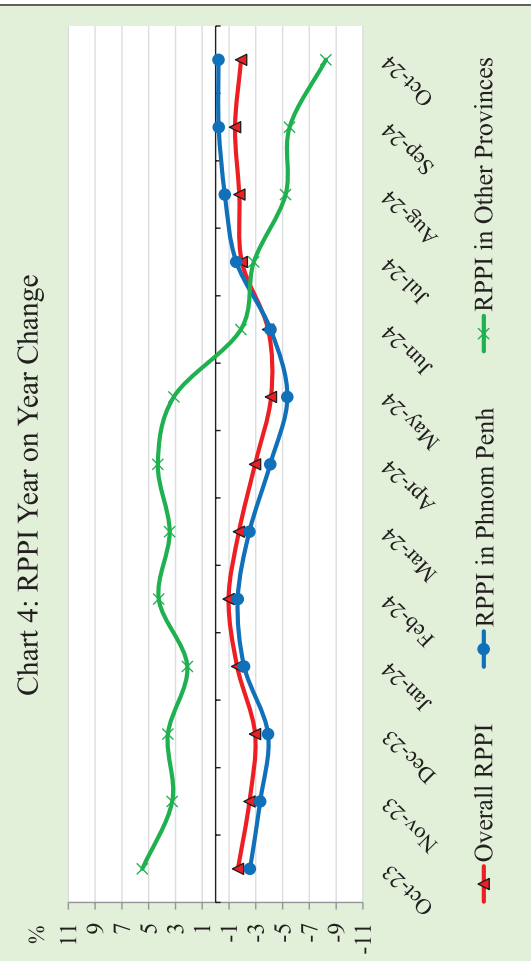
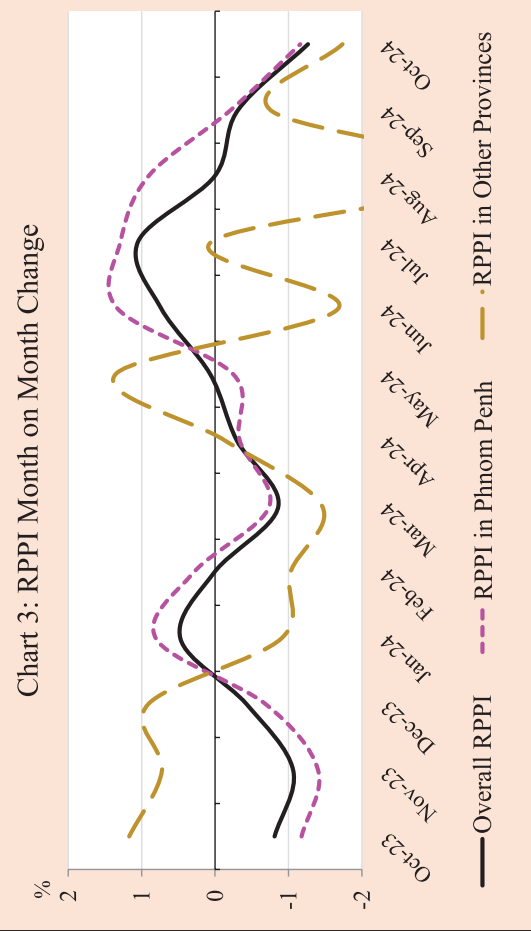


Table 5: Investment Projects Approved by Sectors

(In Million USD)

Sector	Agriculture		Industries		Services		Tourism		Energy		Health care (hospital)		Agro-Industry		Civil Engineering		Infrastructure		Mines		Other		Total			
	Projects	Fixed Assets	Projects	Fixed Assets	Projects	Fixed Assets	Projects	Fixed Assets	Projects	Fixed Assets	Projects	Fixed Assets	Projects	Fixed Assets	Projects	Fixed Assets	Projects	Fixed Assets	Projects	Fixed Assets	Projects	Fixed Assets	Projects	Fixed Assets		
2018																										
Total	13	444.2	115	984.0	10	2,869.9	12	1,577.8	-	-	-	-	-	-	-	-	-	-	-	-	-	-	150	5,875.8		
2019																										
Total	5	68.7	164	859.4	10	1,028.3	17	6,051.6	3	158.6	-	-	-	-	-	-	-	-	-	-	-	-	199	8,166.6		
2020																										
Total	7	105.6	130	1,030.9	5	799.8	6	3,850.5	6	678.7	-	-	-	-	-	-	-	-	-	-	-	-	154	6,465.5		
2021																										
Total	5	60.3	88	980.6	2	9.9	2	127.8	5	509.7	2	18.8	-	-	-	-	-	-	-	-	3	11.4	107	1,718.7		
2022																										
Q4	-	-	20	110.8	1	27.5	2	332.4	-	-	-	-	1	44.3	-	-	-	-	-	-	-	-	1	8.1	25	523.0
Total	4	79.9	99	580.9	3	50.2	5	496.6	1	389.4	4	79.0	4	60.5	2	75.8	1	1,300.0	1	13.0	8	104.1	132	3,229.6		
2023																										
Q1	-	-	26	186.5	-	-	-	-	-	-	-	-	-	-	-	-	-	-	-	-	-	-	1	6.0	27	192.6
Q2	8	151.8	38	313.1	1	14.0	2	37.5	-	-	-	-	-	-	-	-	-	-	-	-	-	-	-	-	49	516.3
Q3	3	20.8	45	560.1	1	91.2	1	84.5	-	-	-	-	-	-	-	-	1	1,376.0	-	-	-	-	-	-	51	2,132.6
Q4	2	10.5	46	932.4	1	27.7	-	-	-	-	-	-	-	-	-	-	-	-	-	-	-	-	-	-	49.0	970.6
Total	13	183.0	155	1,992.1	3	132.9	3	122.0	-	-	-	-	-	-	-	-	1	1,376.0	-	-	1	6.0	176	3,812.1		
2024																										
Q1	4	66.6	61	859.1	2	137.2	2	588.9	-	-	-	-	-	-	-	-	1	108.8	-	-	-	-	-	-	70	1,171.7
Q2	3	16.2	45	210.0	1	6.9	-	-	-	-	-	-	-	-	-	-	1	65.5	-	-	-	-	-	-	50	298.7
Q3	3	37.7	56	318.6	-	-	-	-	-	-	-	-	-	-	-	-	1	6.2	-	-	-	-	-	-	60	362.4
Total	10	120.5	162	1,387.8	3	144.1	2	588.9	-	-	-	-	-	-	-	-	3	180.5	-	-	-	-	-	-	180	1,832.8

Chart 5: Investment Fixed Assets by Sectors

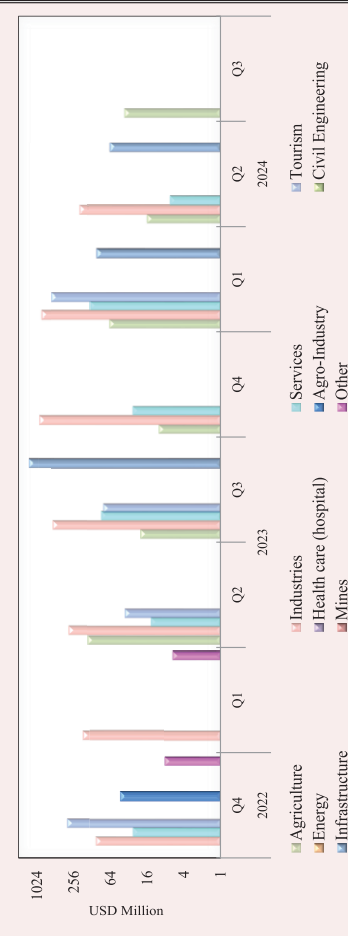
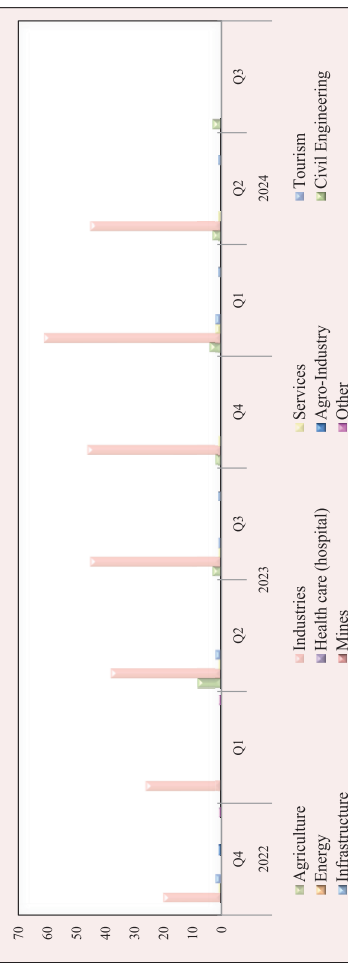


Chart 6: Number of Investment Projects by Sectors



Source: Council for the Development of Cambodia (Cambodian Investment Board)

* Revised data

Table 6: Investment Projects Approved by Major Countries*

(In Million USD)

Country	2022		2023			2024			
	Q4	Q1	Q2	Q3	Q4	Q1	Q2	Q3	
Cambodia	376.0	10.4	154.5	226.7	704.6	1,278.4	76.2	33.5	
China	125.4	101.2	233.7	1,722.6	220.4	336.4	252.2	236.5	
Korea	-	5.6	11.6	4.3	-	10.8	5.0	-	
United States	-	-	5.4	-	-	-	1.5	0.5	
Thailand	-	-	10.4	-	-	-	-	-	
Vietnam	-	-	73.4	-	-	49.0	11.2	5.4	
Malaysia	-	-	-	91.2	-	6.1	-	1.1	
Singapore	-	-	-	5.8	5.2	36.9	-	18.7	
Taiwan	5.1	66.6	-	46.2	16.7	14.3	5.1	27.9	
Australia	-	-	-	-	-	-	5.7	-	
England	-	-	-	-	-	-	-	-	
Japan	-	-	-	-	-	-	-	-	
Hong Kong	16.6	8.8	27.4	35.8	23.7	28.7	24.1	33.7	
Philippines	-	-	-	-	-	-	-	5.2	
Others	-	-	-	-	-	-	-	-	
Total	523.0	192.6	516.3	2,132.7	970.6	1,760.6	381.2	362.4	
				(Share of Total)					
Cambodia	71.9	5.4	29.9	10.6	72.6	72.6	20.0	9.2	
China	24.0	52.5	45.3	80.8	22.7	19.1	66.2	65.3	
Korea	-	2.9	2.2	0.2	-	0.6	1.3	-	
United States	-	-	1.0	-	-	-	0.4	0.1	
Thailand	-	-	2.0	-	-	-	-	-	
Vietnam	-	-	14.2	-	-	2.8	2.9	1.5	
Malaysia	-	-	-	4.3	-	0.3	-	0.3	
Singapore	-	-	-	0.3	0.5	2.1	-	5.2	
Taiwan	1.0	34.6	-	2.2	1.7	0.8	1.3	7.7	
Australia	-	-	-	-	-	-	1.5	-	
England	-	-	-	-	-	-	-	-	
Japan	-	-	-	-	-	-	-	-	
Hong Kong	3.2	4.6	5.3	1.7	2.4	1.6	6.3	9.3	
Philippines	-	-	-	-	-	-	-	1.4	
Others	-	-	-	-	-	-	-	-	
Total	100.0	100.0	100.0	100.0	100.0	100.0	100.0	100.0	

* Fixed Assets

Source: Council for the Development of Cambodia (Cambodian Investment Board)

Table 7: Daily Exchange Rate in October 2024

(KHR/USD)

Day	Parallel Market Rate			Official Rate	Daily Change*	
	Purchase	Sale	Midpoint		Spread	% Change
1	4,056	4,070	4,063	4,061	0.0	0.0
2	4,056	4,070	4,063	4,061	0.0	0.0
3	4,056	4,070	4,063	4,061	0.0	0.0
4	4,055	4,069	4,062	4,059	-1.0	0.0
5	4,055	4,069	4,062	4,059	0.0	0.0
6	4,055	4,069	4,062	4,059	0.0	0.0
7	4,060	4,073	4,067	4,056	5.0	0.1
8	4,061	4,074	4,068	4,064	1.0	0.0
9	4,061	4,072	4,067	4,065	0.0	0.0
10	4,060	4,071	4,066	4,066	-1.0	0.0
11	4,060	4,070	4,065	4,063	0.0	0.0
12	4,060	4,070	4,065	4,063	0.0	0.0
13	4,060	4,070	4,065	4,063	0.0	0.0
14	4,059	4,070	4,065	4,062	-1.0	0.0
15	4,059	4,070	4,065	4,062	0.0	0.0
16	4,059	4,070	4,065	4,060	0.0	0.0
17	4,060	4,070	4,065	4,060	1.0	0.0
18	4,060	4,070	4,065	4,062	0.0	0.0
19	4,060	4,070	4,065	4,060	0.0	0.0
20	4,060	4,070	4,065	4,060	0.0	0.0
21	4,060	4,070	4,065	4,062	0.0	0.0
22	4,060	4,070	4,065	4,062	0.0	0.0
23	4,060	4,070	4,065	4,062	0.0	0.0
24	4,060	4,070	4,065	4,062	0.0	0.0
25	4,060	4,070	4,065	4,061	0.0	0.0
26	4,060	4,070	4,065	4,061	0.0	0.0
27	4,060	4,070	4,065	4,061	0.0	0.0
28	4,060	4,069	4,065	4,061	0.0	0.0
29	4,060	4,069	4,065	4,061	0.0	0.0
30	4,062	4,073	4,068	4,061	2.0	0.0
31	4,063	4,073	4,068	4,063	1.0	0.0
Average Rate	4,059	4,070	4,065	4,061	0.2	0.0

* Spread of Daily Purchasing Market Rate

Table 8: Monthly Exchange Rate

(KHR/USD, End-Period)

Month	Market Rate				Official Rate
	Purchase	Monthly %Change	Sale	Midpoint	
Dec-15	4,048	0.10	4,055	4,052	4,050
Dec-16	4,039	0.17	4,050	4,045	4,037
Dec-17	4,037	0.07	4,046	4,042	4,037
Dec-18	4,027	-0.27	4,039	4,033	4,018
Dec-19	4,079	0.12	4,089	4,084	4,075
Dec-20	4,069	0.00	4,084	4,077	4,045
Dec-21	4,109	0.17	4,118	4,114	4,074
2022					
Dec	4,113	0.07	4,123	4,118	4,117
2023					
Jan	4,102	-0.27	4,113	4,108	4,104
Feb	4,050	-1.27	4,063	4,057	4,043
Mar	4,051	0.02	4,062	4,057	4,054
Apr	4,114	1.56	4,126	4,120	4,115
May	4,116	0.05	4,126	4,121	4,116
Jun	4,126	0.24	4,136	4,131	4,130
Jul	4,124	-0.05	4,134	4,129	4,130
Aug	4,151	0.65	4,161	4,156	4,158
Sep	4,119	-0.77	4,130	4,125	4,122
Oct	4,129	0.24	4,137	4,133	4,135
Nov	4,113	-0.39	4,123	4,118	4,115
Dec	4,080	-0.80	4,090	4,085	4,085
2024					
Jan	4,080	0.00	4,091	4,086	4,083
Feb	4,064	-0.39	4,073	4,069	4,069
Mar	4,040	-0.59	4,049	4,045	4,041
Apr	4,063	0.57	4,074	4,069	4,064
May	4,093	0.74	4,107	4,100	4,093
Jun	4,109	0.39	4,119	4,114	4,110
Jul	4,106	-0.07	4,115	4,111	4,108
Aug	4,058	-1.17	4,069	4,064	4,057
Sep	4,056	-0.05	4,070	4,063	4,061
Oct	4,063	0.17	4,073	4,068	4,063

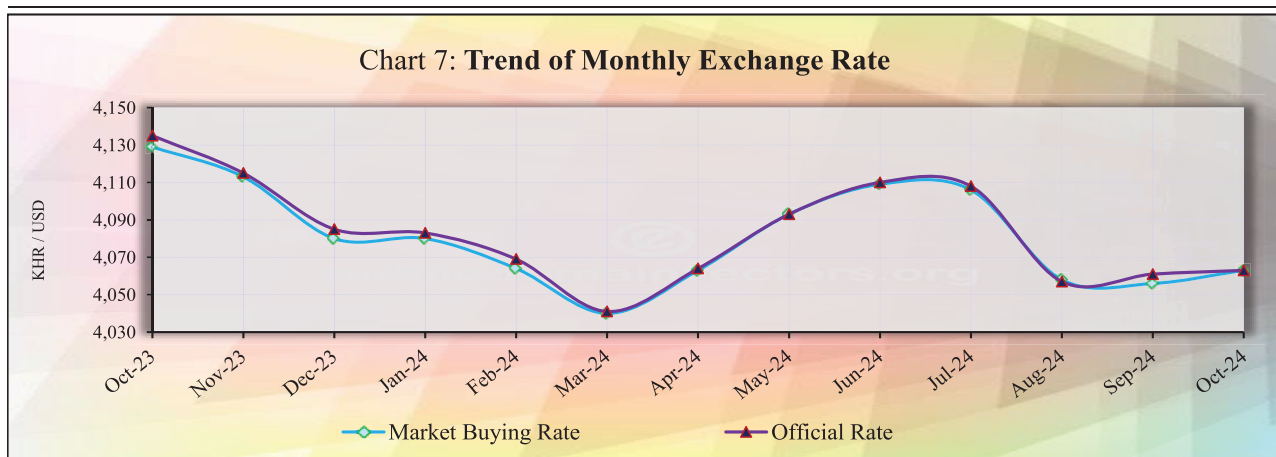


Table 9: The Value of KHR Against Other Currencies

(Official Buying Rate, End-Period)

Unit	SDR	US Dollar	Euro	Japanese Yen	British Pounds	Indonesian Rupiah	Malaysian Ringgit	Philippines Peso	Singapore Dollar	Thai Baht	Vietnamese Dong	China Yuan
	I	I	I	100	I	1000	I	100	I	I	1000	I
Dec-18	5,588	4,018	4,597	3,641	5,098	277	969	7,653	2,942	124	174	584
Dec-19	5,635	4,075	4,565	3,743	5,344	293	994	8,050	3,023	136	176	583
Dec-20	5,826	4,045	4,962	3,908	5,465	287	1,000	8,423	3,049	135	175	619
Dec-21	5,702	4,074	4,614	3,541	5,499	286	977	7,992	3,015	122	179	639
2022												
Nov	5,417	4,122	4,254	2,971	4,923	262	915	7,288	2,997	116	167	576
Dec	5,479	4,117	4,378	3,079	4,956	263	931	7,392	3,053	119	174	591
2023												
Jan	5,545	4,104	4,468	3,155	5,083	274	967	7,524	3,125	125	175	608
Feb	5,368	4,043	4,267	2,969	4,837	265	903	7,283	2,995	115	170	581
Mar	5,454	4,054	4,409	3,062	5,010	269	918	7,452	3,054	118	173	590
Apr	5,561	4,115	4,547	3,074	5,129	280	923	7,385	3,081	121	175	594
May	5,481	4,116	4,405	2,936	5,092	275	894	7,312	3,041	118	175	581
Jun	5,514	4,130	4,508	2,862	5,224	276	884	7,470	3,052	116	175	570
Jul	5,571	4,130	4,527	2,956	5,291	274	907	7,526	3,098	121	174	577
Aug	5,513	4,158	4,518	2,840	5,253	273	895	7,330	3,071	118	172	570
Sep	5,405	4,122	4,336	2,759	5,015	266	876	7,235	3,006	112	169	565
Oct	5,418	4,135	4,363	2,764	5,002	260	868	7,261	3,023	115	168	565
Nov	5,487	4,115	4,523	2,793	5,226	267	885	7,431	3,091	118	170	578
Dec	5,481	4,085	4,541	2,899	5,231	265	887	7,363	3,102	120	168	575
2024												
Jan	5,427	4,083	4,419	2,769	5,181	259	864	7,239	3,048	116	167	569
Feb	5,406	4,069	4,401	2,699	5,142	260	854	7,240	3,022	113	165	565
Mar	5,354	4,041	4,361	2,670	5,094	255	854	7,190	2,994	111	163	559
Apr	5,354	4,064	4,349	2,610	5,085	250	852	7,047	2,987	110	160	561
May	5,417	4,093	4,425	2,606	5,199	252	870	6,981	3,028	111	161	565
June	5,402	4,110	4,391	2,559	5,191	251	871	6,996	3,028	111	161	565
July	5,447	4,108	4,448	2,654	5,282	252	890	7,008	3,057	114	162	567
Aug	5,470	4,057	4,497	2,804	5,350	263	938	7,208	3,115	119	163	571
Sep	5,497	4,061	4,525	2,838	5,431	269	986	7,245	3,165	125	165	579
Oct	5,395	4,063	4,395	2,651	5,285	258	927	6,973	3,068	121	160	570
Monthly % Change	-1.86	0.05	-2.87	-6.59	-2.69	-4.09	-5.98	-3.75	-3.06	-3.20	-3.03	-1.55

Table 10: Deposit Money Bank's Interest Rates on Deposits and Loans in KHR and USD

	Dec-19	Dec-20	Dec-21	Dec-22	Apr-23	May-23	Jun-23	Jul-23	Aug-23	Sep-23	Oct-23	Nov-23	Dec-23	Jan-24	Feb-24	Mar-24	Apr-24	May-24	Jun-24	Jul-24	Aug-24	Sep-24	Oct-24	
<i>Weighted Average Rate on New Amount</i>																								
Interest Rate on Deposits and Loans in KHR																								
Deposit																								
Demand Deposits	0.12	0.03	0.35	0.29	0.19	0.16	0.20	0.18	0.18	0.18	0.25	0.24	0.24	0.19	0.18	0.16	0.28	0.17	0.25	0.37	0.37	0.33	0.30	0.17
Saving Deposits	0.60	0.60	1.05	0.85	0.88	0.87	0.88	0.89	0.87	0.89	0.89	0.89	0.91	0.83	0.92	0.83	0.80	0.81	0.81	0.88	0.87	0.87	0.86	0.85
Term Deposits	4.10	5.34	4.79	6.12	6.64	7.00	6.67	6.91	6.61	6.64	6.64	6.65	6.82	6.54	6.69	6.09	5.76	5.93	6.13	5.85	5.74	5.76	5.30	5.26
Other Deposits	2.47	3.49	2.20	7.16	6.72	4.77	6.99	6.52	6.10	6.28	6.23	6.51	7.09	7.10	7.18	6.96	7.22	6.91	6.28	6.65	6.57	6.30	6.45	
Loans																								
Overdraft	7.72	7.14	6.32	7.38	9.42	9.06	9.46	9.48	10.66	10.49	10.48	8.89	7.61	8.90	8.71	8.86	9.13	7.13	9.98	11.35	11.13	11.07	10.26	
Credit Card	16.73	14.21	13.84	15.66	15.73	13.62	13.61	14.01	14.97	13.24	14.34	14.02	16.20	14.52	12.80	12.05	12.70	9.85	13.07	13.41	12.71	12.85	12.85	
Term Loans	9.13	10.15	10.18	10.88	11.82	12.35	11.86	11.87	11.42	12.08	12.69	12.25	11.40	12.45	12.67	12.32	12.45	12.58	11.56	12.36	12.52	11.92	11.45	
Other Loans	5.59	6.47	7.00	5.24	7.20	7.60	6.89	6.65	6.88	6.71	7.05	7.52	4.93	6.63	6.94	6.93	6.28	6.19	7.32	8.00	7.43	7.74	7.83	
Interest Rate on Deposits and Loans in USD																								
Deposit																								
Demand Deposits	0.20	0.10	0.18	0.32	0.33	0.36	0.37	0.38	0.33	0.43	0.42	0.43	0.26	0.37	0.35	0.65	0.35	0.43	0.48	0.48	0.49	0.47	0.33	
Saving Deposits	0.24	0.17	0.21	0.30	0.30	0.31	0.41	0.30	0.26	0.30	0.32	0.28	0.42	0.35	0.36	0.36	0.36	0.35	0.35	0.27	0.27	0.27	0.27	
Term Deposits	3.44	3.24	3.98	5.59	5.42	5.63	5.75	5.49	5.71	5.84	5.57	5.87	6.08	5.83	5.86	5.67	5.70	5.34	5.22	5.02	5.15	4.60	4.62	
Other Deposits	2.47	0.80	3.93	6.57	6.39	6.83	7.14	6.19	6.64	7.42	6.46	7.57	6.20	6.88	7.48	7.42	7.04	7.05	6.95	6.83	5.88	7.35	7.68	
Loans																								
Overdraft	7.57	6.15	5.97	7.68	7.45	7.81	7.93	7.53	8.32	8.08	8.25	8.30	8.13	8.30	8.47	8.04	7.71	6.55	8.13	7.97	8.55	8.54	7.14	
Credit Card	11.97	17.02	17.27	17.45	17.91	17.99	17.82	17.70	17.51	17.22	18.14	17.72	18.25	17.05	16.90	17.33	17.31	16.67	16.91	16.59	16.16	16.42	16.31	
Term Loans	8.72	9.11	9.09	9.10	9.83	9.61	9.46	10.13	9.88	10.46	10.57	10.41	9.78	10.34	10.35	10.05	10.33	10.96	10.06	10.72	10.82	10.05	10.90	
Other Loans	6.50	6.01	5.93	6.67	7.28	7.36	7.41	7.22	7.28	7.41	7.51	7.69	7.23	7.55	7.66	7.68	7.64	7.58	7.69	7.44	7.53	7.50	7.06	
<i>Weighted Average Rate on Outstanding Amount</i>																								
Interest Rate on Deposits and Loans in KHR																								
Deposit																								
Demand Deposits	0.22	0.19	0.47	0.54	0.43	0.42	0.40	0.44	0.47	0.51	0.51	0.54	0.57	0.54	0.59	0.43	0.48	0.53	0.49	0.55	0.58	0.52	0.58	
Saving Deposits	0.91	0.82	1.02	1.12	1.09	1.18	1.18	1.18	1.18	1.23	1.23	1.27	1.24	1.25	1.15	1.15	1.18	1.21	1.26	1.30	1.20	1.15	1.16	
Term Deposits	5.42	5.66	5.85	6.63	7.10	7.20	7.21	7.28	7.25	7.32	7.31	7.28	7.34	7.35	7.32	7.30	7.28	7.21	7.20	7.08	6.93	6.78	6.78	
Other Deposits	2.81	3.20	2.20	2.23	1.71	1.74	2.32	2.39	5.97	6.26	6.30	6.56	6.67	6.38	6.90	6.72	6.65	6.78	6.44	6.44	6.84	6.85	6.79	
Loans																								
Overdraft	8.08	7.93	8.26	8.48	8.44	8.45	8.40	8.44	8.46	8.48	8.51	8.09	8.14	8.14	8.15	8.13	8.08	8.12	8.27	8.41	8.73	8.91	9.12	
Credit Card	17.29	16.25	15.30	14.26	13.94	14.16	14.05	14.10	13.95	13.78	13.73	13.82	13.85	13.80	13.78	13.71	13.63	13.42	13.39	13.47	13.17	13.30	13.08	
Term Loans	10.62	10.54	10.52	10.62	10.69	10.72	10.76	10.75	10.75	11.30	11.32	11.31	11.32	11.36	11.36	11.33	11.38	11.39	11.39	11.42	11.45	11.45	11.42	
Other Loans	6.28	6.73	6.67	6.46	6.63	6.57	6.58	6.47	6.70	6.44	6.44	6.39	6.06	6.33	6.30	6.34	6.31	6.31	6.25	6.30	6.40	6.49	6.55	
Interest Rate on Deposits and Loans in USD																								
Deposit																								
Demand Deposits	0.35	0.41	0.40	0.60	0.72	0.79	0.75	0.79	0.81	0.79	0.81	0.85	0.88	0.88	0.89	1.00	0.99	1.04	1.03	1.07	1.12	1.09	1.17	
Saving Deposits	0.43	0.41	0.47	0.65	0.67	0.72	0.71	0.75	0.71	0.77	0.79	0.78	0.78	0.80	0.80	0.73	0.75	0.76	0.81	0.84	0.84	0.79	0.78	
Term Deposits	4.34	4.40	4.53	5.26	5.65	5.75	5.85	5.93	6.01	6.24	6.28	6.25	6.38	6.40	6.41	6.40	6.40	6.34	6.32	6.25	6.19	6.10	6.01	
Other Deposits	2.43	0.94	3.28	2.76	2.28	2.47	2.13	2.11	4.56	4.62	4.70	4.78	3.90	4.72	4.59	4.83	4.94	5.00	3.80	4.26	4.90	4.92	5.03	
Loans																								
Overdraft	7.82	7.71	7.47	7.38	7.45	7.49	7.51	7.53	7.57	7.83	7.67	7.69	7.71	7.68	7.71	7.72	7.71	7.62	7.66	7.64	7.65	7.68	7.67	
Credit Card	15.53	17.11	16.62	16.13	16.33	16.12	16.15	16.15	16.03	15.99	15.95	16.04	16.06	16.07	15.99	15.85	16.01	15.88	16.09	15.97	15.92	15.81	15.94	
Term Loans	9.51	9.36	9.18	9.22	9.26	9.27	9.28	9.30	9.31	9.73	9.73	9.76	9.75	9.75	9.76	9.76	9.77	9.91	9.89	10.01	9.93	9.92	9.93	
Other Loans	7.19	6.93	6.83	6.86	7.13	7.15	7.08	7.31	7.33	7.38	7.40	7.44	7.47	7.46	7.45	8.27	7.49	7.43	7.56	7.54	7.56	7.56	7.52	

Including Commercial Banks and Specialized Banks
*Revised Data

Table 11: Central Bank Survey*

(In Billion KHR)

	Jun-24	Jul-24	Aug-24	Sep-24	Oct-24
Net Foreign Assets	80,776.7	82,050.5	83,511.1	83,705.6	84,022.0
Claims on Nonresidents	82,145.6	83,430.7	84,897.1	85,098.5	85,389.4
Liabilities to Nonresidents	-1,368.9	-1,380.2	-1,386.0	-1,392.9	-1,367.4
Claims on Other Depository Corporations	1,011.9	869.0	696.2	644.0	557.7
Net Claims on Central Government	-11,267.5	-11,181.1	-10,789.8	-9,863.6	-10,315.9
Claims on Central Government	0.0	0.0	0.0	0.0	0.0
Liabilities to Central Government	-11,267.5	-11,181.1	-10,789.8	-9,863.6	-10,315.9
Claims on Other Sectors	55.6	66.4	68.3	70.0	80.9
Claims on Other Financial Corporations	0.0	0.0	0.0	0.0	0.0
Claims on State and Local Government	0.0	0.0	0.0	0.0	0.0
Claims on Public Nonfinancial Corporations	0.0	0.0	0.0	0.0	0.0
Claims on Private Sector	55.6	66.4	68.3	70.0	80.9
Monetary Base	56,988.6	57,918.7	58,176.3	57,008.6	58,409.8
Currency in Circulation	17,205.1	17,111.5	17,321.4	17,914.6	17,281.3
Liabilities to Other Depository Corporations	39,743.2	40,762.3	40,812.2	39,068.9	41,103.1
Liabilities to Other Sectors	40.4	44.8	42.7	25.0	25.4
Other Liabilities to Other Depository Corporations	10,723.7	10,017.6	9,636.4	9,785.0	9,480.7
Deposits And Securities Other Than Shares Excl. Form Monetary Base	52.6	51.1	50.8	50.8	50.9
Deposits Included in Broad Money	0.0	0.0	0.0	0.0	0.0
Securities Other Than Shares Incl. in Broad Money	0.0	0.0	0.0	0.0	0.0
Deposits Excl. From Broad Money	52.6	51.1	50.8	50.8	50.9
Securities Other Than Shares Excl. From Broad Money	0.0	0.0	0.0	0.0	0.0
Loans	0.0	0.0	0.0	0.0	0.0
Financial Derivatives	0.0	0.0	0.0	0.0	0.0
Shares and Other Equity	5,955.1	6,889.4	8,636.7	10,736.0	9,413.3
Other Items (Net)	-3,143.3	-3,072.1	-3,014.4	-3,024.5	-3,010.0
<i>IFS Vertical Check</i>	<i>0.0</i>	<i>0.0</i>	<i>0.0</i>	<i>0.0</i>	<i>0.0</i>

* Included only central bank

** Revised Data

Table 12: Other Depository Corporations Survey*

(In Billion KHR)

	Jun-24	Jul-24	Aug-24	Sep-24	Oct-24
Net Foreign Assets	-6,254.3	-3,268.0	-376.2	1,843.8	3,841.2
Claims on Nonresidents	32,488.6	35,130.0	36,670.9	38,116.6	38,459.9
Liabilities to Nonresidents	-38,743.0	-38,398.0	-37,047.1	-36,272.8	-34,618.7
Claims On Central Bank	52,284.5	52,379.5	52,562.6	51,771.9	52,991.9
Currency	2,393.4	2,387.5	2,524.6	2,550.1	2,549.0
Reserve Deposits and Securities Other Than Shares	49,853.2	49,957.7	50,006.4	49,195.0	50,419.8
Other Claims on Central Bank	37.9	34.2	31.7	26.8	23.1
Net Claims on Central Government	-10,729.3	-10,721.1	-10,831.8	-11,162.7	-11,280.4
Claims on Central Government	530.5	514.6	526.3	538.6	529.4
Liabilities to Central Government	-11,259.7	-11,235.6	-11,358.2	-11,701.4	-11,809.8
Claims on Other Sectors	235,218.8	235,775.7	233,648.9	235,662.7	236,178.4
Claims on Other Financial Corporations	3,853.2	3,833.1	2,697.3	2,704.3	2,679.5
Claims on State and Local Government	0.0	0.0	0.0	0.0	0.0
Claims on Public Nonfinancial Corporations	1.8	46.5	1.3	8.8	1.3
Claims on Private Sector	231,363.8	231,896.0	230,950.3	232,949.6	233,497.6
Liabilities to Central Bank	3,896.9	3,816.2	3,734.4	3,854.0	3,810.2
Transferable Deposits Incl. in Broad Money	29,840.0	29,948.6	30,783.4	31,624.5	31,659.3
Other Deposits Incl. in Broad Money	164,801.6	167,743.8	167,935.2	170,504.8	172,311.4
Securities Other Than Shares Incl. in Broad Money	0.0	0.0	0.0	0.0	0.0
Deposits Excl. From Broad Money	166.4	221.8	209.5	248.4	248.0
Securities Other Than Shares Excl. From Broad Money	0.0	0.0	0.0	0.0	0.0
Loans	2,236.1	2,390.1	1,888.4	1,821.2	1,879.4
Financial Derivatives	0.0	0.0	0.0	0.0	0.0
Shares and Other Equity	61,995.9	62,237.0	61,885.3	62,676.0	62,757.3
Other Items (Net)	7,582.8	7,808.6	8,567.3	7,386.8	9,065.5
<i>IFS Vertical Check</i>	<i>0.0</i>	<i>0.0</i>	<i>0.0</i>	<i>0.0</i>	<i>0.0</i>

* Included commercial banks and MDIs

** Revised Data

Table 13: Depository Corporations Survey*

(In Billion KHR)

	Jun-24	Jul-24	Aug-24	Sep-24	Oct-24
Net Foreign Assets	74,522.4	78,782.5	83,135.0	85,549.4	87,863.2
Claims on Nonresidents	114,634.2	118,560.7	121,568.0	123,215.1	123,849.3
Liabilities to Nonresidents	-40,111.8	-39,778.2	-38,433.1	-37,665.8	-35,986.1
Domestic Claims	213,277.6	213,939.8	212,095.6	214,706.3	214,663.0
Net Claims on Central Government	-21,996.7	-21,902.2	-21,621.6	-21,026.3	-21,596.3
Claims on Central Government	530.5	514.6	526.3	538.6	529.4
Liabilities to Central Government	-22,527.2	-22,416.8	-22,147.9	-21,565.0	-22,125.7
Claims on Other Sectors	235,274.3	235,842.0	233,717.2	235,732.7	236,259.3
Claims on Other Financial Corporations	3,853.2	3,833.1	2,697.3	2,704.3	2,679.5
Claims on State and Local Government	0.0	0.0	0.0	0.0	0.0
Claims on Public Nonfinancial Corporations	1.8	46.5	1.3	8.8	1.3
Claims on Private Sector	231,419.4	231,962.4	231,018.6	233,019.6	233,578.6
Broad Money Liabilities (M2)	209,493.7	212,461.2	213,558.1	217,518.9	218,728.4
Currency Outside Depository Corporations	14,811.7	14,724.0	14,796.8	15,364.5	14,732.3
Transferable Deposits	29,862.3	29,975.4	30,808.2	31,631.6	31,666.7
Other Deposits	164,819.6	167,761.8	167,953.1	170,522.8	172,329.4
Securities Other Than Shares	0.0	0.0	0.0	0.0	0.0
<i>of which Foreign Currency (of M2)</i>	<i>176,368.2</i>	<i>178,992.4</i>	<i>179,931.9</i>	<i>183,058.8</i>	<i>184,726.3</i>
Deposits Excl. From Broad Money	219.0	272.9	260.3	299.2	298.9
Securities Other Than Shares Excl. From Broad Money	0.0	0.0	0.0	0.0	0.0
Loans	2,236.1	2,390.1	1,888.4	1,821.2	1,879.4
Financial Derivative	0.0	0.0	0.0	0.0	0.0
Shares and Other Equity	67,950.9	69,126.4	70,522.0	73,412.0	72,170.6
Other Items (Net)	7,900.3	8,471.8	9,001.7	7,204.5	9,448.9
<i>IFS Vertical Check</i>	<i>0.0</i>	<i>0.0</i>	<i>0.0</i>	<i>0.0</i>	<i>0.0</i>

* Included data of central bank and other depository corporations(ODCs)

** Revised Data

Table 14: Other Financial Corporations Survey*

(In Billion KHR)

	Jun-24	Jul-24	Aug-24	Sep-24	Oct-24
Net Foreign Assets	-980.5	-970.6	-942.0	-893.2	-908.6
Claims on Nonresidents	569.1	575.9	585.3	586.4	574.6
Liabilities to Nonresidents	-1,549.5	-1,546.5	-1,527.3	-1,479.6	-1,483.2
Claims on Depository Corporations	5,980.4	5,996.4	5,960.1	6,087.9	6,116.2
Net Claims on Central Government	-11.2	-11.4	-12.0	-12.8	-13.1
Claims on Central Government	4.9	5.1	5.2	5.4	5.5
Liabilities to Central Government	-16.1	-16.4	-17.2	-18.1	-18.6
Claims on Other Sectors	8,717.7	8,744.0	8,826.4	8,900.6	8,913.8
Claims on State and Local Government	0.0	0.0	0.0	0.0	0.0
Claims on Public Nonfinancial Corporations	2.6	2.6	2.6	1.5	1.5
Claims on Private Sector	8,715.1	8,741.3	8,823.8	8,899.1	8,912.4
Deposit	1.7	1.6	1.7	1.8	1.4
Securities Other Than Shares	0.0	0.0	0.0	0.0	0.0
Loans	4,906.5	4,977.5	5,006.5	5,185.0	5,218.5
Financial Derivatives	0.0	0.0	0.0	0.0	0.0
Shares and Other Equity	6,500.8	6,510.5	6,563.3	6,589.6	6,606.6
Other Items (Net)	-118.0	-146.7	-154.6	-182.7	-206.8
<i>IFS Vertical Check</i>	<i>0.0</i>	<i>0.0</i>	<i>0.0</i>	<i>0.0</i>	<i>0.0</i>

* Included only specialized banks from Dec-2013 to Dec-2020.
From Jan-2021 to present, OFCs included Specialized Banks,
MFIs and Insurance Companies.

** Revised Data

Table 15: Financial Corporations Survey*

(In Billion KHR)

	Jun-24	Jul-24	Aug-24	Sep-24	Oct-24
Net Foreign Assets	73,541.9	77,811.9	82,193.0	84,656.1	86,954.6
Claims on Nonresidents	115,203.3	119,136.6	122,153.4	123,801.5	124,423.9
Liabilities to Nonresidents	-41,661.4	-41,324.6	-39,960.4	-39,145.4	-37,469.3
Domestic Claims	218,131.0	218,839.3	218,212.7	220,889.8	220,884.3
Net Claims on Central Government	-22,007.9	-21,913.6	-21,633.6	-21,039.1	-21,609.4
Claims on Central Government	535.4	519.7	531.5	544.0	534.9
Liabilities to Central Government	-22,543.3	-22,433.2	-22,165.2	-21,583.1	-22,144.3
Claims on Other Sectors	240,138.9	240,752.9	239,846.3	241,928.9	242,493.7
Claims on State and Local Government	0.0	0.0	0.0	0.0	0.0
Claims on Public Nonfinancial Corporations	4.4	49.2	3.9	10.3	2.8
Claims on Private Sector	240,134.5	240,703.7	239,842.4	241,918.7	242,490.9
Currency Outside Financial Corporations	14,798.0	14,709.7	14,778.9	15,348.5	14,714.2
Deposits	191,697.4	194,722.9	195,837.1	199,211.0	200,988.1
Securities Other Than Shares	0.0	0.0	0.0	0.0	0.0
Loans	6,848.4	7,097.7	6,635.0	6,733.9	6,830.2
Financial Derivatives	0.0	0.0	0.0	0.0	0.0
Shares and Other Equity	74,451.8	75,636.8	77,085.3	80,001.6	78,777.2
Other Items (Net)	1,461.7	2,068.6	3,653.8	1,762.4	4,040.5
<i>IFS Vertical Check</i>	<i>0.0</i>	<i>0.0</i>	<i>0.0</i>	<i>0.0</i>	<i>0.0</i>

* Included data of depository corporations and other financial corporations

** Revised Data

Chart 8: Financial Corporations Survey

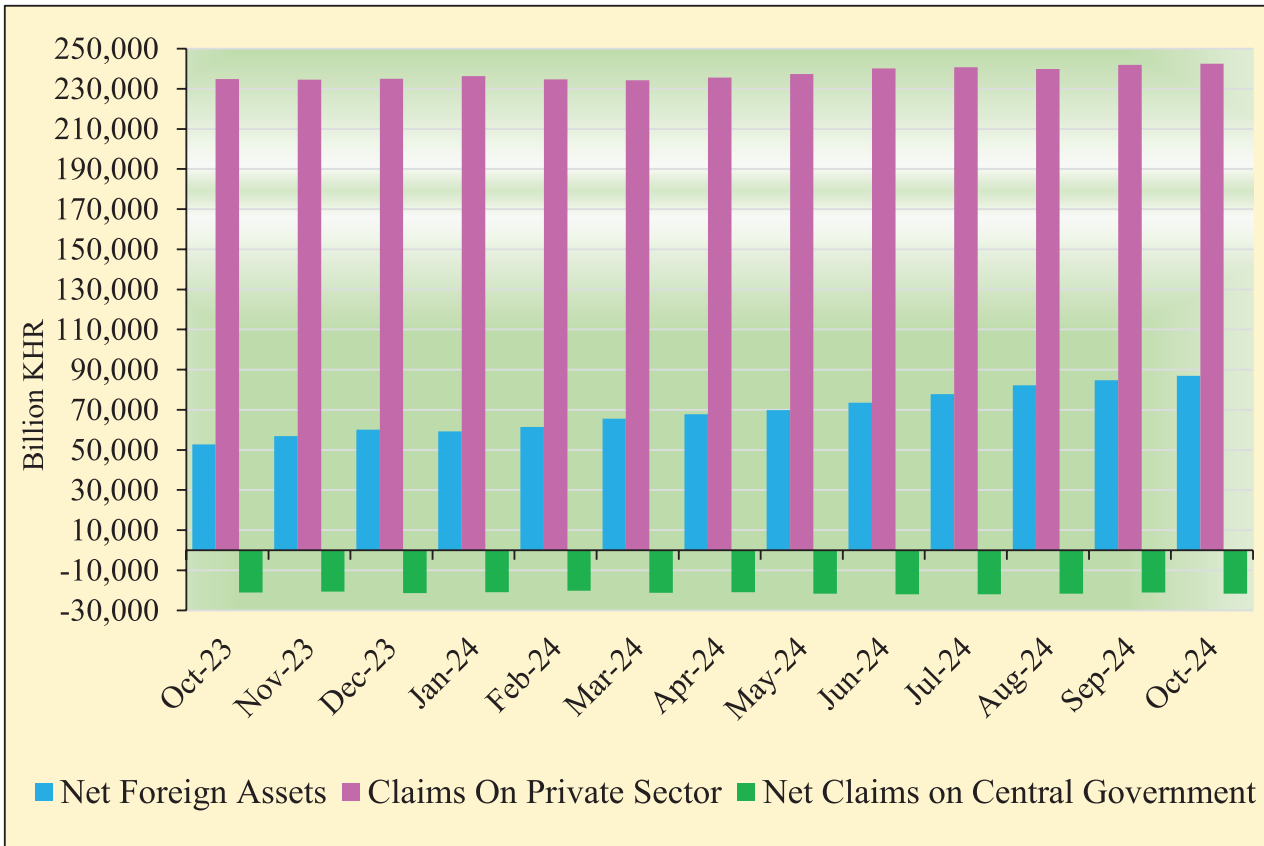


Chart 9: Monetary Aggregates Components

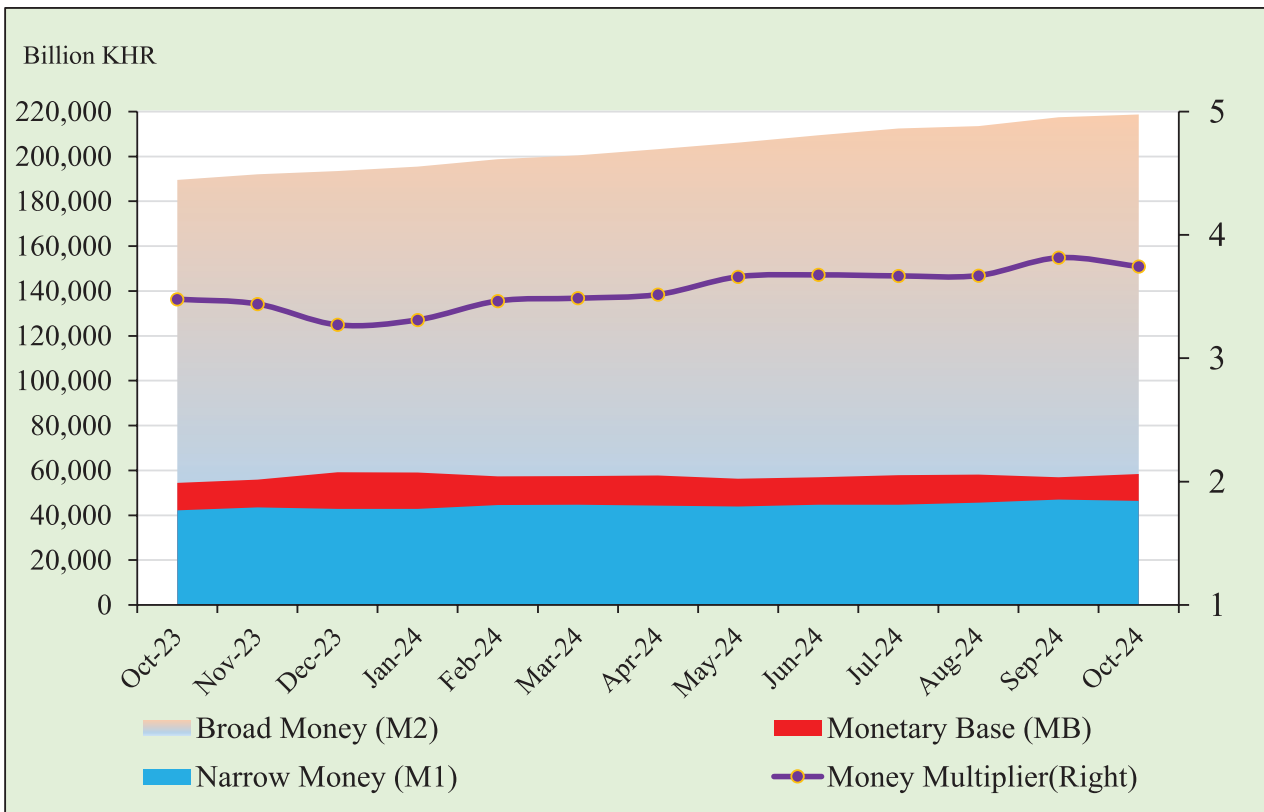


Table 16: Credit Granted by Banking Institutions Classified by Industry

(In Billion KHR)

	Jun-24	Jul-24	Aug-24	Sep-24	Oct-24
1. Financial Institutions	6,736.4	6,853.0	6,686.9	6,723.6	6,709.9
1.1. National Bank of Cambodia	0.0	0.0	0.0	0.0	0.0
1.2. Depository Institutions	4,939.4	5,072.9	4,857.1	4,911.6	4,904.8
1.3. Other Financial Institutions	1,796.9	1,780.1	1,829.8	1,812.0	1,805.1
2. Non-Financial Institutions	165,665.6	166,065.2	164,154.5	165,944.2	166,465.6
2.1. Agriculture, Forestry and Fishing	19,178.2	19,196.4	19,112.6	19,283.9	19,269.9
2.2. Mining and Quarrying	1,169.0	1,176.9	1,119.5	1,204.1	1,212.8
2.3. Manufacturing	9,503.7	9,315.2	9,294.2	9,705.8	9,797.5
2.4. Utilities	2,624.2	2,684.2	2,667.9	2,793.6	2,795.2
2.5. Construction	22,224.1	22,479.3	22,465.9	22,324.6	22,170.3
2.6. Wholesale Trade	19,326.0	19,303.8	19,068.7	19,045.0	19,307.3
2.7. Retail Trade	37,601.3	37,476.0	37,064.1	37,247.1	37,295.5
2.8. Hotels and Restaurants	8,206.9	8,360.4	8,222.3	8,823.4	8,878.9
2.9. Transport and Storage	6,390.5	6,373.7	6,277.2	6,224.0	6,163.3
2.10. Information Media and Telecommunications	1,035.7	1,034.6	1,014.0	1,003.0	1,001.1
2.11. Rental and Operational Leasing Activities, Excluding Real Estate Leasing and Rentals	2,894.2	2,997.3	2,963.9	2,933.6	2,945.0
2.12. Real Estate Activities	24,663.3	24,791.0	24,110.2	24,674.8	24,863.1
2.13. Other Non-Financial Services	10,848.5	10,876.5	10,774.0	10,681.5	10,765.6
3. Personal Essentials	49,842.3	49,990.1	49,938.8	49,828.9	49,836.6
3.1. Personal Lending	21,489.1	21,713.9	21,268.4	21,169.1	21,282.7
3.2. Credit Cards	782.1	799.7	809.8	827.8	868.0
3.3. Mortgages, Owner-Occupied Housing only	27,571.1	27,476.5	27,860.6	27,832.1	27,685.8
4. Other Lending	3,027.8	2,999.1	2,935.0	3,095.6	3,095.6
Total Gross Loan	225,272.1	225,907.4	223,715.1	225,592.4	226,107.8

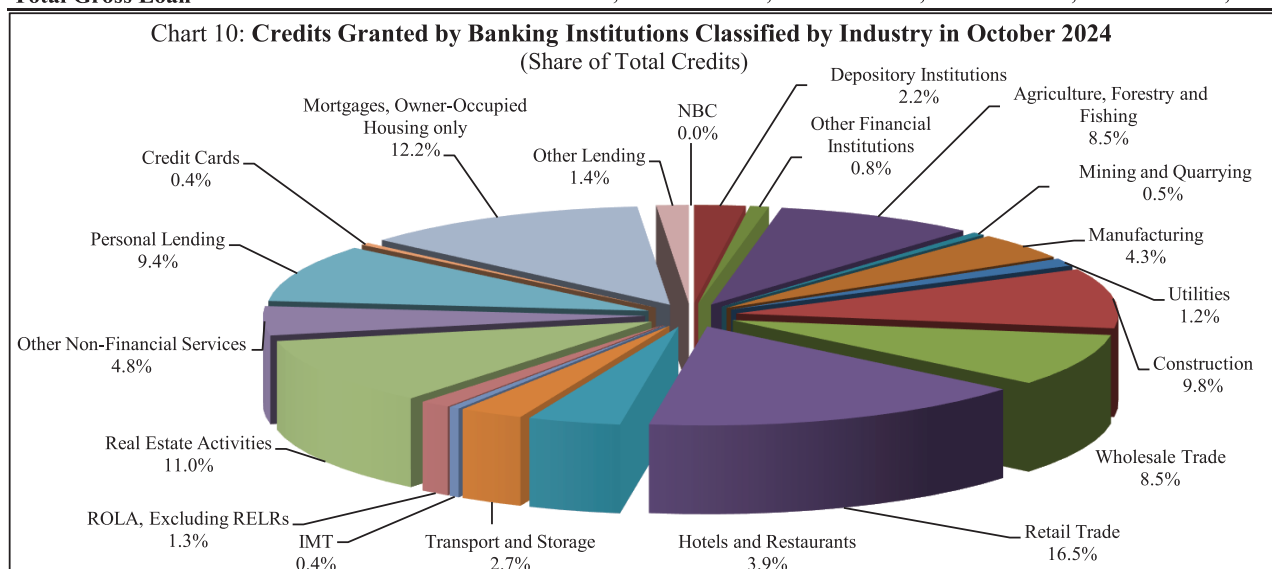


Table 17: Monthly Change of Credit Granted by Banking Institutions Classified by Industry

	Jun-24	Jul-24	Aug-24	Sep-24	Oct-24
(Monthly Change in Billion KHR)					
1. Financial Institutions	-160.8	116.7	-166.1	36.7	-13.7
1.1. National Bank of Cambodia	0.0	0.0	0.0	0.0	0.0
1.2. Depository Institutions	-190.9	133.5	-215.9	54.6	-6.8
1.3. Other Financial Institutions	30.0	-16.8	49.7	-17.8	-6.9
2. Non-Financial Institutions	1,769.6	399.6	-1,910.7	1,789.8	521.4
2.1. Agriculture, Forestry and Fishing	-12.9	18.1	-83.8	171.3	-13.9
2.2. Mining and Quarrying	-26.1	8.0	-57.5	84.6	8.8
2.3. Manufacturing	71.7	-188.5	-21.0	411.6	91.7
2.4. Utilities	72.8	60.0	-16.3	125.8	1.5
2.5. Construction	1,337.6	255.2	-13.4	-141.3	-154.3
2.6. Wholesale Trade	345.1	-22.3	-235.0	-23.7	262.3
2.7. Retail Trade	100.2	-125.3	-411.8	182.9	48.5
2.8. Hotels and Restaurants	13.8	153.4	-138.0	601.1	55.5
2.9. Transport and Storage	-31.1	-16.8	-96.5	-53.2	-60.7
2.10. Information Media and Telecommunications	-16.4	-1.1	-20.6	-11.0	-1.9
2.11. Rental and Operational Leasing Activities, Excluding Real Estate Leasing and Rentals	-107.8	103.1	-33.4	-30.3	11.4
2.12. Real Estate Activities	174.2	127.7	-680.8	564.6	188.3
2.13. Other Non-Financial Services	-151.5	27.9	-102.5	-92.5	84.2
3. Personal Essentials	839.6	147.9	-51.4	-109.9	7.6
3.1. Personal Lending	466.6	224.8	-445.6	-99.3	113.7
3.2. Credit Cards	33.1	17.6	10.1	18.0	40.2
3.3. Mortgages, Owner-Occupied Housing only	339.9	-94.6	384.1	-28.6	-146.3
4. Other Lending	86.8	-28.8	-64.0	160.6	0.1
Total Gross Loan	2,535.1	635.4	-2,192.3	1,877.2	515.4
(Monthly Percentage Change)					
1. Financial Institutions	-2.3	1.7	-2.4	0.5	-0.2
1.1. National Bank of Cambodia	0.0	0.0	0.0	0.0	0.0
1.2. Depository Institutions	-3.7	2.7	-4.3	1.1	-0.1
1.3. Other Financial Institutions	1.7	-0.9	2.8	-1.0	-0.4
2. Non-Financial Institutions	1.1	0.2	-1.2	1.1	0.3
2.1. Agriculture, Forestry and Fishing	-0.1	0.1	-0.4	0.9	-0.1
2.2. Mining and Quarrying	-2.2	0.7	-4.9	7.6	0.7
2.3. Manufacturing	0.8	-2.0	-0.2	4.4	0.9
2.4. Utilities	2.9	2.3	-0.6	4.7	0.1
2.5. Construction	6.4	1.1	-0.1	-0.6	-0.7
2.6. Wholesale Trade	1.8	-0.1	-1.2	-0.1	1.4
2.7. Retail Trade	0.3	-0.3	-1.1	0.5	0.1
2.8. Hotels and Restaurants	0.2	1.9	-1.7	7.3	0.6
2.9. Transport and Storage	-0.5	-0.3	-1.5	-0.8	-1.0
2.10. Information Media and Telecommunications	-1.6	-0.1	-2.0	-1.1	-0.2
2.11. Rental and Operational Leasing Activities, Excluded Real Estate Leasing and Rentals	-3.6	3.6	-1.1	-1.0	0.4
2.12. Real Estate Activities	0.7	0.5	-2.7	2.3	0.8
2.13. Other Non-Financial Services	-1.4	0.3	-0.9	-0.9	0.8
3. Personal Essentials	1.7	0.3	-0.1	-0.2	0.0
3.1. Personal Lending	2.2	1.0	-2.1	-0.5	0.5
3.2. Credit Cards	4.4	2.3	1.3	2.2	4.9
3.3. Mortgages, Owner-Occupied Housing only	1.2	-0.3	1.4	-0.1	-0.5
4. Other Lending	2.9	-0.9	-2.1	5.5	0.0
Total Gross Loan	1.1	0.3	-1.0	0.8	0.2

Table 18: Deposits with Banks

(In Billion KHR)

	Jun-24	Jul-24	Aug-24	Sep-24	Oct-24
Deposits in KHR					
Demand deposits	5,111.9	5,053.9	4,939.8	5,206.5	5,056.6
Savings deposits	4,829.0	4,983.9	4,954.5	4,862.3	5,046.5
Fixed deposits	13,143.9	13,464.0	13,739.5	13,961.5	14,021.8
Others	455.7	465.3	469.3	490.6	512.5
Total	23,540.5	23,967.2	24,103.2	24,520.9	24,637.3
Deposits in Foreign Currency*					
Demand deposits	29,576.5	29,594.7	30,636.9	31,333.8	31,261.3
Savings deposits	45,864.1	47,018.9	47,599.2	48,932.3	49,429.0
Fixed deposits	104,128.4	105,389.9	104,726.4	105,721.0	106,468.7
Others	3,146.5	3,301.9	3,305.9	3,338.6	3,356.7
Total	182,715.5	185,305.4	186,268.4	189,325.7	190,515.8
Grand Total	206,256.0	209,272.6	210,371.6	213,846.5	215,153.1

* Deposits in foreign currency include deposits of Cambodian residents and non-residents

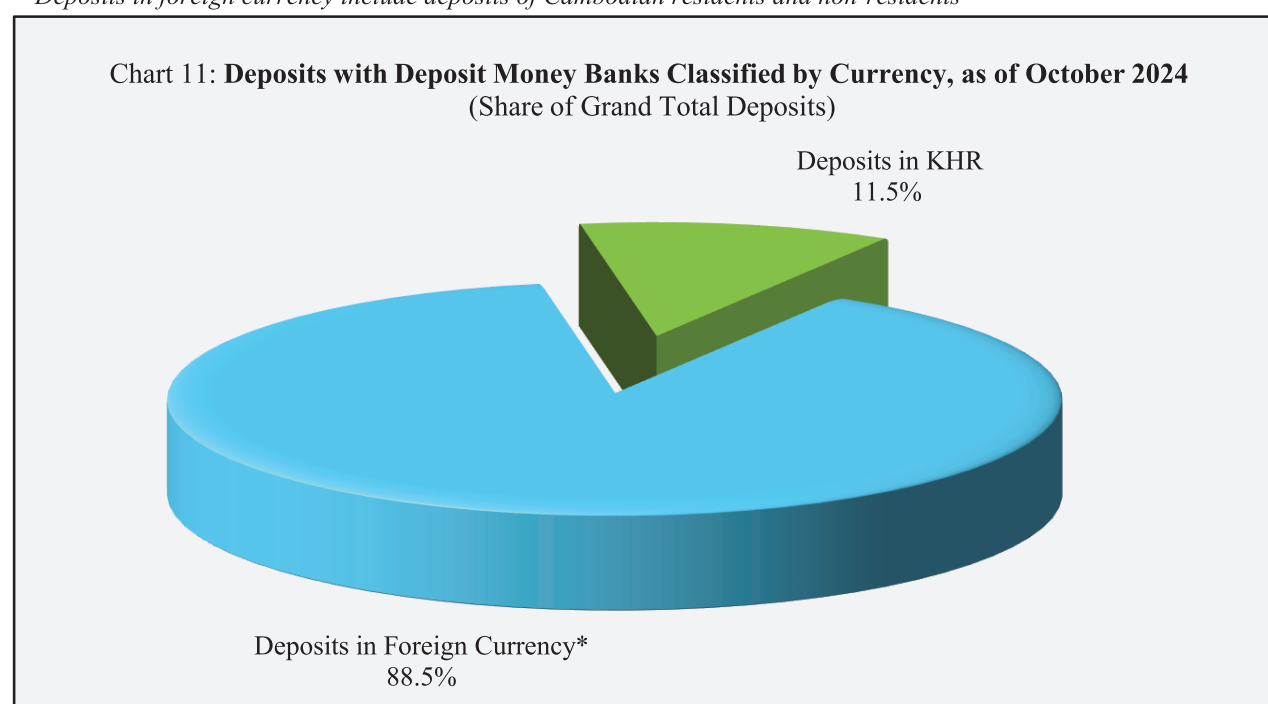


Table 19: Monthly Change of Deposits with Banks

	Jun-24	Jul-24	Aug-24	Sep-24	Oct-24
(Change in Billion KHR)					
Deposits in KHR					
Demand deposits	560.2	-58.0	-114.1	266.7	-150.0
Savings deposits	394.4	154.9	-29.4	-92.3	184.2
Fixed deposits	199.7	320.1	275.5	222.0	60.3
Others	7.3	9.6	4.0	21.3	21.8
Total	1,161.5	426.7	136.0	417.7	116.4
Deposits in Foreign Currency					
Demand deposits	645.3	18.2	1,042.1	696.9	-72.4
Savings deposits	795.9	1,154.8	580.4	1,333.1	496.7
Fixed deposits	976.2	1,261.5	-663.5	994.6	747.7
Others	83.1	155.4	4.0	32.7	18.2
Total	2,500.6	2,589.9	963.0	3,057.3	1,190.1
Grand Total	3,662.1	3,016.6	1,099.0	3,475.0	1,306.5
(Percentage Change)					
Deposits in KHR					
Demand deposits	12.3	-1.1	-2.3	5.4	-2.9
Savings deposits	8.9	3.2	-0.6	-1.9	3.8
Fixed deposits	1.5	2.4	2.0	1.6	0.4
Others	1.6	2.1	0.9	4.5	4.4
Total	5.2	1.8	0.6	1.7	0.5
Deposits in Foreign Currency					
Demand deposits	2.2	0.1	3.5	2.3	-0.2
Savings deposits	1.8	2.5	1.2	2.8	1.0
Fixed deposits	0.9	1.2	-0.6	0.9	0.7
Others	2.7	4.9	0.1	1.0	0.5
Total	1.4	1.4	0.5	1.6	0.6
Grand Total	1.8	1.5	0.5	1.7	0.6

Chart 12: Deposits in KHR Classified by Type, as of October 2024

(Share of Total KHR Deposits)

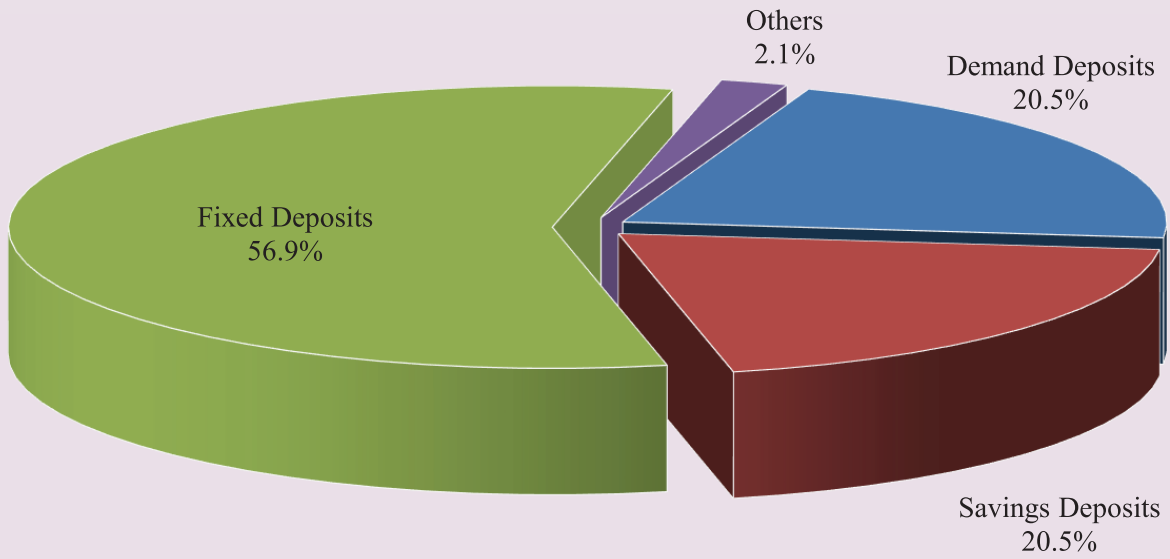


Chart 13: Deposits in Foreign Currency Classified by Type, as of October 2024

(Share of Total Foreign Currency Deposits)

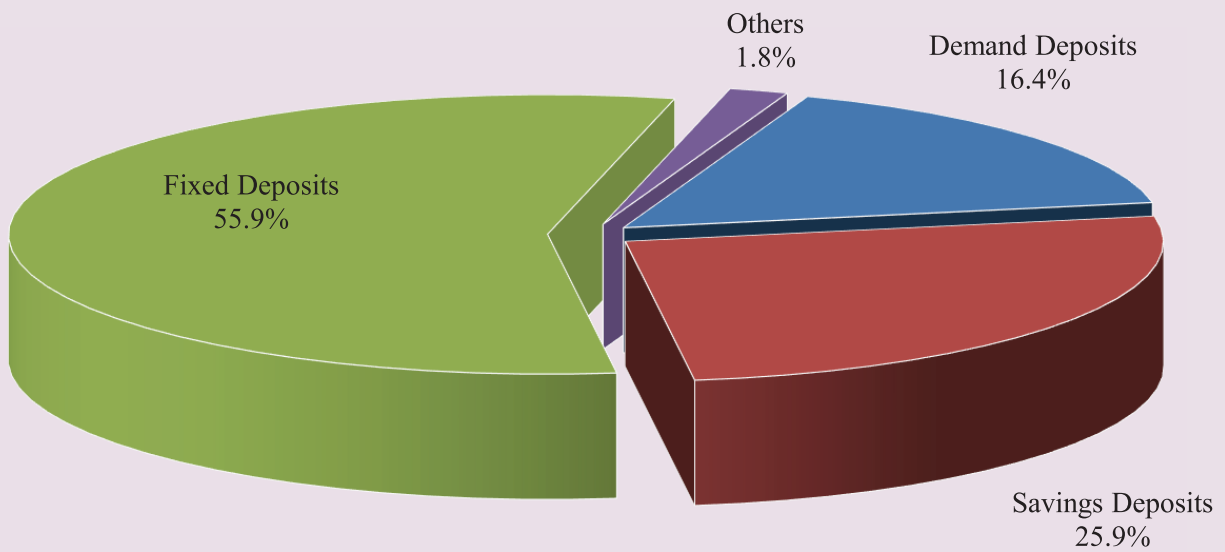


Table 20: Credit Granted by Micro-Finance Institutions*

Period	Numbers of				Loan Outstanding (In Billion KHR)	Interest Rate	
	District	Commune	Village	Household		Monthly	Annually
Dec-14	2,754	18,254	107,964	1,844,893	8,340	2% - 3%	27%-39%
Dec-15	4,576	27,510	141,514	2,149,180	12,365	2% - 4%	25%-41%
Dec-16	5,971	32,599	155,499	2,129,907	12,954	2% - 4%	25%-41%
2017*							
	Numbers of Branches			Number of Borrowers**	Loan Outstanding (In Billion KHR)	Interest Rate	
	Head Office	Province/ Krong	District/Khan			Monthly	Annually
Dec-17	76	366	975	1,776,467	17,236	1.4%-2.5%	16.9%-28.8%
Dec-18	80	399	944	1,872,916	21,813	1.2%-2.0%	15.1%-24.0%
Dec-19	82	406	965	2,109,170	29,357	1.1%-1.6%	13.4%-18.7%
Dec-20	79	343	749	1,919,926	27,527	1.1%-1.6%	13.4%-18.3%
Dec-21	77	325	664	1,897,878	31,723	1.1%-1.5%	13.3%-17.6%
Dec-22	86	343	679	2,129,150	38,932	1.1%-1.4%	13.0%-17.3%
2023							
Jan	87	342	676	2,138,432	39,335	1.1%-1.5%	13.1%-17.9%
Feb	87	342	676	2,149,437	39,255	1.0%-1.5%	12.1%-17.9%
Mar	87	346	678	2,164,707	39,684	1.0%-1.5%	12.1%-17.9%
Apr	87	346	683	2,169,008	40,068	1.0%-1.5%	12.1%-17.9%
May	87	358	674	2,179,962	40,022	1.0%-1.5%	11.6%-17.9%
Jun	87	362	672	2,185,693	40,198	1.0%-1.5%	11.5%-17.9%
Jul	87	362	671	2,188,142	40,269	0.9%-1.5%	10.2%-18.1%
Aug	87	359	652	2,163,738	40,710	0.8%-1.5%	10.2%-18.3%
Sep	86	310	517	1,625,506	21,240	1.0%-1.5%	12.2%-18.1%
Oct	87	309	518	1,627,775	21,299	1.0%-1.5%	12.1%-18.1%
Nov	87	308	517	1,626,914	21,182	1.0%-1.5%	12.1%-18.1%
Dec	87	310	515	1,620,818	21,036	1.0%-1.5%	12.1%-18.1%
2024							
Jan	87	311	516	1,619,022	21,086	1.0%-1.5%	12.1%-18.1%
Feb	87	310	514	1,617,466	21,065	1.0%-1.5%	12.1%-18.1%
Mar	87	308	513	1,614,548	20,973	1.0%-1.5%	11.9%-18.1%
Apr	87	310	516	1,606,045	20,975	1.0%-1.5%	12.1%-18.1%
May	87	309	515	1,606,776	21,076	1.0%-1.5%	12.0%-18.1%
Jun	88	309	515	1,601,907	21,256	1.0%-1.5%	12.0%-18.2%
Jul	88	311	514	1,604,177	21,352	1.0%-1.5%	12.0%-18.2%
Aug	88	311	514	1,603,773	21,279	0.9%-1.5%	10.0%-18.2%
Sep	88	310	514	1,603,371	21,455	0.9%-1.5%	10.3%-18.2%
Oct	89	311	517	1,598,572	21,523	0.9%-1.5%	10.2%-18.2%

* Including MFI and MDI

** Including Individuals and Legal Entities

*** Revised Data

Table 21: KHR-Denominated Checks Clearing through Clearing House

Date	Number of Cleared Check	Number of Working Day	Number of Cleared Check Per Day	Total Amount (In Billion KHR)	Daily Average Amount (In Billion KHR)	Returned Check	
						Number	Amount (In Billion KHR)
	1	2	3 = 1/2	4	5 = 4/2	6	7
Dec-16	3,938	22	179	490.0	22.3	13	3.15
Total	82,291	242	340	5,421.8	22.4	186	117.50
Dec-17	3,074	20	154	599.0	30.0	22	12.48
Total	37,485	239	1,885	6,607.8	27.6	138	28.51
Dec-18	2,994	19	158	935.1	49.2	16	6.58
Total	38,249	232	165	9,424.1	40.6	197	152.90
Dec-19	3,734	21	178	1,584.1	75.4	18	11.33
Total	41,696	236	177	13,602.7	57.6	206	630.84
Dec-20	3,264	23	142	1,839.6	80.0	5	0.57
Total	35,570	240	148	22,955.3	95.6	101	5,074.92
Dec-21	3,028	23	132	1,763.0	76.7	14	26.86
Total	31,749	242	131	19,089.4	78.9	99	466.43
2022							
Dec	3,106	22	141	1,898.0	86.3	8	1.79
Total	33,608	251	134	19,831.3	79.0	68	88.91
2023							
Jan	2,683	22	122	1,693.0	77.0	6	22.70
Feb	2,775	20	139	1,780.5	89.0	5	0.50
Mar	3,141	22	143	2,588.0	117.6	20	16.40
Apr	2,680	19	141	1,785.5	94.0	7	0.40
May	2,832	20	142	1,749.9	87.5	16	11.80
Jun	2,991	22	136	1,880.9	85.5	6	0.10
Jul	2,578	20	129	1,421.8	71.1	9	10.36
Aug	3,112	23	135	1,791.1	77.9	14	1.90
Sep	2,793	21	133	1,730.6	82.4	9	1.55
Oct	2,792	21	133	1,682.6	80.1	22	9.83
Nov	2,553	19	134	1,665.6	87.7	26	1.80
Dec	3,179	21	151	2,233.3	106.3	14	56.82
Total	34,109	250	136	22,002.8	88.0	154	134.16
2024							
Jan	2,706	22	123	1,867.4	84.9	6	5.83
Feb	2,859	21	136	1,410.9	67.2	8	3.51
Mar	2,822	20	141	2,019.4	101.0	8	1.60
Apr	2,718	20	136	1,750.6	87.5	14	93.25
May	2,773	20	139	1,745.9	87.3	11	3.27
Jun	2,639	19	139	1,476.0	77.7	6	1.73
Jul	2,815	23	122	1,839.9	80.0	8	0.80
Aug	2,695	21	128	1,740.0	82.9	5	5.73
Sep	2,615	20	131	1,784.3	89.2	10	4.41
Oct	2,487	18	138	1,816.2	100.9	12	0.43
Total	27,129	204	133	17,450.5	85.5	88	120.56

Table 22: USD-Denominated Checks Clearing through Clearing House

Date	Number of Checks Cleared	Number of days Cleared	Number of Cleared Check per Day	Total Amount (In Million USD)	Daily Average Amount (In Million USD)	Returned Checks	
						Number	Amount
						6	7 (In Million USD)
	1	2	3 = 1/2	4	5 = 4/2		
Dec-16	92,820	22	4,219	2,220.4	100.9	778	44.8
Total	1,025,209	242	4,236	21,790.4	90.0	8,738	439.6
Dec-17	101,093	20	5,055	2,824.6	141.2	789	37.6
Total	1,107,752	239	4,635	26,812.7	112.2	8,863	440.4
Dec-18	111,978	19	5,894	3,917.1	206.2	904	63.6
Total	1,238,232	232	5,337	41,462.7	178.7	10,474	2,686.1
Dec-19	121,353	21	5,779	4,448.5	211.8	964	87.1
Total	1,337,800	236	5,669	51,609.1	218.7	10,654	3,779.9
Dec-20	111,749	23	4,859	4,369.7	190.0	714	45.0
Total	1,200,110	240	5,000	50,220.0	209.3	8,620	8,737.8
Dec-21	104,666	23	4,551	5,002.1	217.5	672	65.5
Total	1,077,104	242	4,451	46,380.6	191.7	8,423	517.9
2022							
Nov	86,441	19	4,550	3,771.7	198.5	864	71.5
Dec	97,561	22	4,435	4,152.9	188.8	948	78.7
Total	1,105,712	251	4,405	53,853.9	214.6	8,739	1,764.0
2023							
Jan	85,292	22	3,877	3,749.7	170.4	886	103.8
Feb	81,623	20	4,081	3,644.1	182.2	941	83.9
Mar	97,101	22	4,414	4,207.1	191.2	1,045	79.3
Apr	78,164	19	4,114	3,471.0	182.7	861	66.2
May	94,501	20	4,725	3,836.8	191.8	1,054	86.9
Jun	89,627	22	4,074	3,911.5	177.8	958	78.2
Jul	84,307	20	4,215	3,600.8	180.0	1,018	62.8
Aug	91,909	23	3,996	3,755.6	163.3	1,059	74.0
Sep	83,733	21	3,987	3,399.1	161.9	963	52.6
Oct	84,135	21	4,006	3,327.6	158.5	920	55.9
Nov	80,278	19	4,225	3,245.3	170.8	935	78.6
Dec	91,040	21	4,335	4,284.5	204.0	957	58.5
Total	1,041,710	250	4,167	44,433.1	177.7	11,597	880.6
2024							
Jan	89,845	22	4,084	3,929.3	178.6	907	205.6
Feb	79,161	21	3,770	3,504.7	166.9	865	49.7
Mar	83,061	20	4,153	3,939.2	197.0	795	60.1
Apr	83,184	20	4,159	3,731.5	186.6	847	56.5
May	87,578	20	4,379	4,040.0	202.0	989	70.2
Jun	79,542	19	4,186	3,726.2	196.1	797	130.5
Jul	93,088	23	4,047	4,170.8	181.3	841	43.8
Aug	86,462	21	4,117	14,139.5	673.3	794	10,063.1
Sep	84,895	20	4,245	3,743.1	187.2	777	110.1
Oct	77,084	18	4,282	4,335.5	240.9	700	839.4
Total	843,900	204	4,137	49,259.8	241.5	8,312	11,629.0

Table 23: Visitor Arrivals in Cambodia

	2024			% of Total		% Change	
	Aug	Sep	Oct	Sep	Oct	Sep/Aug	Oct/Sep
(Mode of Arrival)							
Phnom Penh International Airport	146,207	133,672	159,555	26.2	27.8	-8.6	19.4
Kong Keng International Airport	2,996	2,886	3,908	0.6	0.7	-3.7	35.4
Siem Reap International Airport	41,406	29,509	43,056	5.8	7.5	-28.7	45.9
Land	352,763	340,132	361,923	66.8	63.0	-3.6	6.4
Boat	5,456	3,275	5,764	0.6	1.0	-40.0	76.0
Preah Vihea	0	0	0	0.0	0.0	0.0	0.0
Total	548,828	509,474	574,206	100.0	100.0	-7.2	12.7
(Arrival by Purpose of Visit)							
Tourist	414,293	383,201	423,925	75.2	73.8	-7.5	10.6
Business and Professional	124,697	119,154	141,376	23.4	24.6	-4.4	18.6
Others and not specified	9,838	7,119	8,905	1.4	1.6	-27.6	25.1
Total	548,828	509,474	574,206	100.0	100.0	-7.2	12.7
(Top-Ten Countries of Passenger Arrivals)							
Thailand	193,216	186,918	197,835	36.7	34.5	-3.3	5.8
Vietnam	111,008	104,962	113,432	20.6	19.8	-5.4	8.1
China (PRC)	74,854	68,708	84,194	13.5	14.7	-8.2	22.5
Lao PDR	17,233	23,286	16,987	4.6	3.0	35.1	-27.1
Indonesia	14,022	14,140	16,256	2.8	2.8	0.8	15.0
United States of America	17,474	10,141	15,994	2.0	2.8	-42.0	57.7
South Korea	15,063	12,007	13,346	2.4	2.3	-20.3	11.2
France	9,134	4,473	9,486	0.9	1.7	-51.0	112.1
Australia	7,107	7,944	9,108	1.6	1.6	11.8	14.7
United Kingdom	6,613	4,968	8,562	1.0	1.5	-24.9	72.3
Others	83,104	71,927	89,006	14.1	15.5	-13.4	23.7
Total	548,828	509,474	574,206	100.0	100.0	-7.2	12.7

Source: Ministry of Tourism

** Increased in times, not in percentage (%).*

Table 24: Cambodia's Imports and Exports

	(In Billion KHR)						
	2024			Change in Billion KHR		Change in %	
	Aug	Sep	Oct	Sep/Aug	Oct/Sep	Sep/Aug	Oct/Sep
Imports by Commodity							
Medicine	92.8	96.7	102.6	3.9	6.0	4.2	6.2
Cigarette	108.2	76.5	115.7	-31.7	39.1	-29.3	51.1
Food and Beverage	427.4	423.3	444.3	-4.1	20.9	-1.0	4.9
Equipment Construction	366.3	295.0	355.7	-71.4	60.7	-19.5	20.6
Cement	5.9	3.8	3.7	-2.0	-0.1	-35.0	-3.9
Steel	212.0	195.8	211.8	-16.2	16.0	-7.6	8.2
Phones	8.6	21.1	17.0	12.5	-4.0	146.0	-19.2
T.V	1.6	2.6	2.9	1.0	0.3	61.9	11.2
Other Electronic Equipment	91.1	84.1	86.7	-7.0	2.7	-7.7	3.2
Garment	266.5	240.9	239.3	-25.6	-1.6	-9.6	-0.7
Fabric	2,024.8	1,694.9	1,921.7	-329.9	226.8	-16.3	13.4
Vehicle	531.8	567.5	612.9	35.7	45.4	6.7	8.0
Equipment of Cold	37.0	30.0	33.1	-7.0	3.1	-19.0	10.5
Gold	0.0	0.0	0.0	0.0	0.0	0.0	0.0
Oil	1,055.7	986.7	1,054.8	-69.0	68.1	-6.5	6.9
Fertilizer	94.9	69.8	106.5	-25.2	36.7	-26.5	52.7
Others	4,821.3	4,173.8	4,376.6	-647.5	202.8	-13.4	4.9
Total Imports	10,145.9	8,962.4	9,685.3	-1,183.6	722.9	-11.7	8.1
Exports by Commodity							
Garment	4,766.4	3,687.6	2,484.7	-1,078.8	-1,203.0	-22.6	-32.6
Footwear	678.2	506.2	479.0	-172.0	-27.2	-25.4	-5.4
Other Textile Product	1,098.1	866.0	637.5	-232.1	-228.5	-21.1	-26.4
Electrical Part	779.5	521.1	181.5	-258.3	-339.6	-33.1	-65.2
Vehicle and Bicycle Part	94.8	90.5	88.6	-4.3	-2.0	-4.5	-2.2
Bicycle	150.4	133.9	116.7	-16.5	-17.2	-11.0	-12.8
Wood Products	198.7	177.2	156.6	-21.5	-20.6	-10.8	-11.6
Rice	102.3	132.8	198.8	30.5	66.0	29.8	49.7
Rubber	279.8	232.5	244.4	-47.3	11.9	-16.9	5.1
Fish and Other Agricultural Products	821.7	859.2	647.3	37.5	-211.8	4.6	-24.7
Others	2,939.2	2,091.9	1,950.7	-847.3	-141.2	-28.8	-6.8
Total Exports	11,909.0	9,298.9	7,185.7	-2,610.1	-2,113.2	-21.9	-22.7

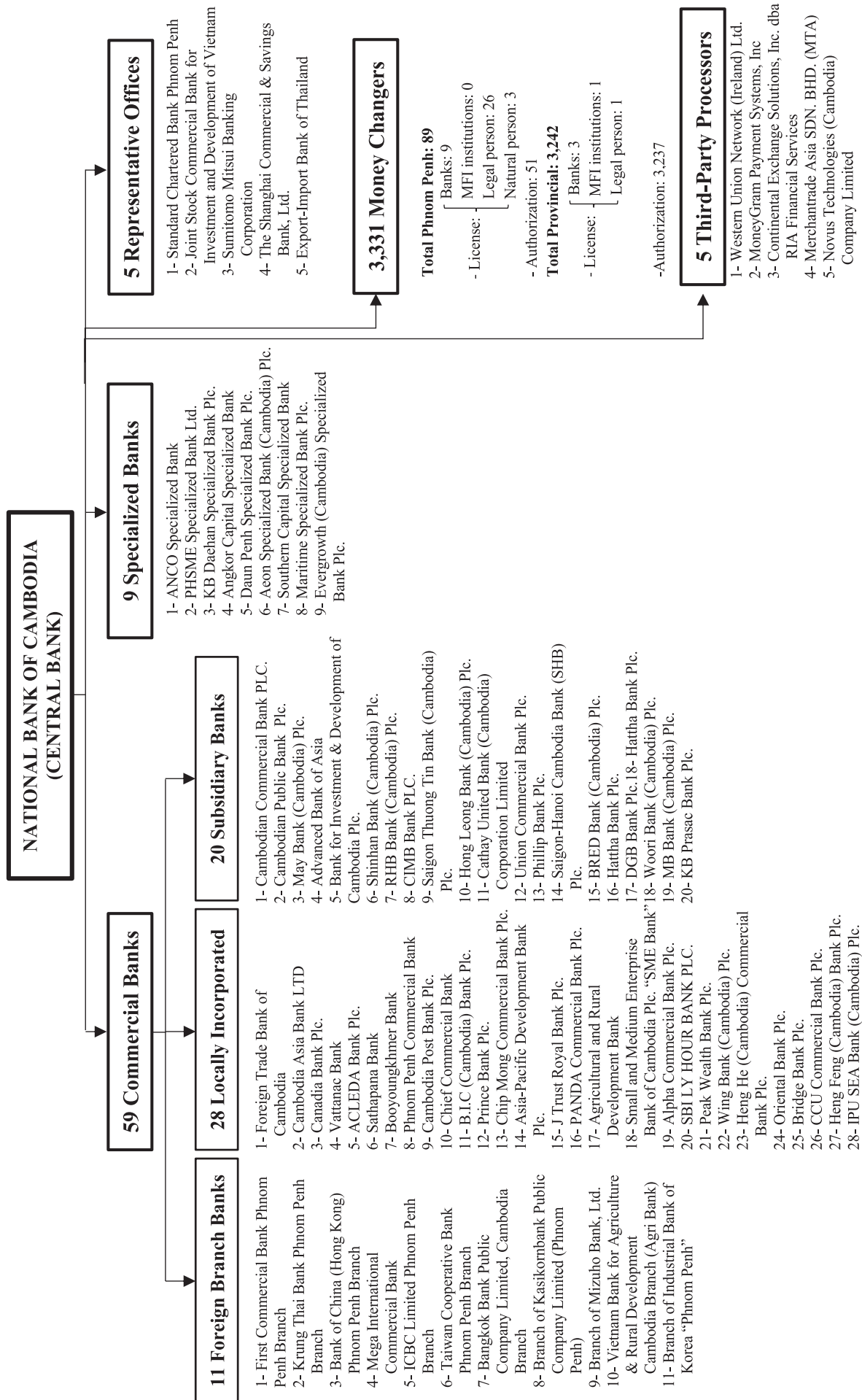
Source: General Department of Cambodia Customs and Excise

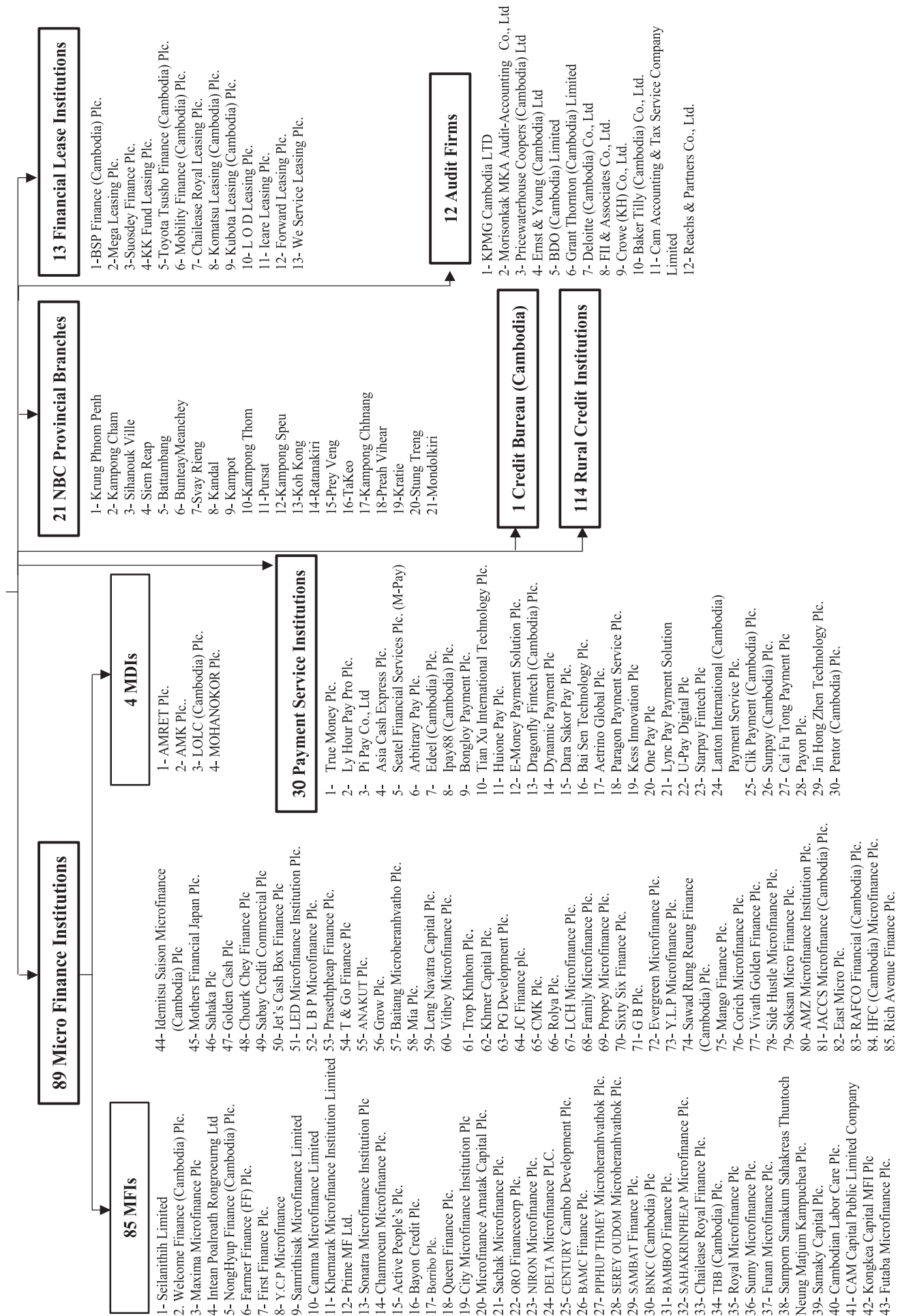
** Increased in times, not in percentage (%).*

*** Revised Data*

Table 25: THE BANKING SYSTEM IN CAMBODIA

As of 31 October 2024





អ៊ីនធឺណែត

INTERNET

: www.nbc.gov.kh គឺជាគេហទំព័ររបស់ធនាគារជាតិនៃកម្ពុជា។ ទិន្នន័យថ្មីៗក្នុងគេហទំព័រ និង ទិន្នន័យបន្តបន្ទាប់ទៀត ត្រូវបាននិងកំពុងដាក់បញ្ចូលទៅក្នុងប្រព័ន្ធទិន្នន័យ តាមធនធានដែលមាន។ លើសពីនេះទៀត គេហទំព័រនេះ គឺជាទីតាំងដ៏ល្អបំផុតដើម្បីទទួលបានទិន្នន័យសង្ខេបនៃការចេញផ្សាយចុងក្រោយបង្អស់។

www.nbc.gov.kh is the National Bank of Cambodia website. The website new data and metadata are progressively being added to the database, as resources permit. This website is the best place to start for access to summary data from the latest publications.

សេវាព័ត៌មាន

INFORMATION SERVICE

: បុគ្គលិករបស់នាយកដ្ឋានស្ថិតិ នៃធនាគារជាតិនៃកម្ពុជា អាចជួយចង្អុលបង្ហាញ ឬណែនាំអ្នកប្រើប្រាស់ក្នុងការស្វែងរកទិន្នន័យតាមតម្រូវការ។ ការបោះពុម្ពផ្សាយរបស់ធនាគារជាតិនៃកម្ពុជា អាចរកជាប់បាន ហើយសេវាលើការជាប់ប្រចាំអាចរៀបចំបានដែរ។ ចំពោះសេវាលើទិន្នន័យពិសេសផ្សេងទៀតក៏អាចរកបានផងដែរ តាមរយៈការមកជាប់ព្រឹត្តិបត្រដោយផ្ទាល់។

The Statistics Department staff of the National Bank of Cambodia can assist users in addressing their data requirements. The National Bank of Cambodia publications are available for sale and subscription services can be arranged. Other special data services are also available, on a user pays basis.

អាសយដ្ឋានទំនាក់ទំនង

CONTACT DETAILS

ធនាគារជាតិនៃកម្ពុជា

NATIONAL BANK OF CAMBODIA

នាយកដ្ឋានស្ថិតិ

Statistics Department

អគារលេខ ៦៩-៧០ មហាវិថីហាណូយ (លេខ១០១៩) ភូមិបាយ៉ាប សង្កាត់ភ្នំពេញថ្មី

ខណ្ឌសែនសុខ រាជធានីភ្នំពេញ

#69-70, Hanoi Blvd. (1019), Phum Bayab, Sangkat Phnom Penh Thmei,

Khan Sen Sok, Phnom Penh

អ៊ីម៉ែល : statistics@nbc.gov.kh

E-mail : statistics@nbc.gov.kh

ទូរស័ព្ទ : (៨៥៥) ២៣ ៧២២ ៥៦៣ – ១១១៥

Telephone : (855) 23 722 563 – 1115

ទូរសារ : (៨៥៥) ២៣ ៤២៦ ១១៧

Facsimile : (855) 23 426 117



ISSN 2074-5680

ផលិតដោយ ធនាគារជាតិនៃកម្ពុជា

Produced by the National Bank of Cambodia